



|Soulpepper| CROW'S THEATRE THE HOWLAND COMPANY

THE WELKIN

By Lucy Kirkwood
Directed by Weyni Mengesha



It is deeply meaningful to me that *The Welkin* marks the close of my seven-year chapter as Artistic Director of Soulpepper Theatre. During this time, I have been privileged to champion stories and writers who ask big, unsettling questions about who we are, how we live together, and how history shapes us. Lucy Kirkwood is one of those writers.

Set in 1759, *The Welkin* asks questions that resonate today: Who holds the power to decide the fate of others? Whose voices are heard? How does a society reckon with truth and justice?

Though centuries separate us from the women in this story, the cycles they navigate—progress, backlash, and the ongoing struggle for women’s rights—remain familiar.

Kirkwood approaches these questions with courage, meticulous research, and sharp humour, giving us thirteen fully realized, complex female characters. Witnessing them navigate one another’s contradictions, strengths, and flaws is a rare gift—one that drew me to this play and that we are fortunate to bring to life with such an extraordinary cast.

As you join us on the journey of *The Welkin*, I hope you carry with you the same sense of curiosity, wonder, and reflection that has guided my time at Soulpepper.

Thank you for being here, enjoy the show.

Weyni Mengesha
Director, *The Welkin*

Historical Context

Welcome to 1759: The Year of Wonders

England is a colonial power on the rise, after major military victories in Quebec, Germany, and Portugal. The British dubbed 1759 their ‘Annus mirabilis’.

Up in the skies, Halley’s Comet appears in England. It moved slowly and could be seen for several months, keeping everyone looking up to catch this ‘blazing star’ that was thought to portend great changes.

For people living in rural villages, life is also changing:

- **The rich are getting richer.**
With the Enclosure Movement, wealthy landowners can legally seize control of common lands used for grazing and farming.
- **Petty theft is now a hangable offense.**
Due to the 1723 Black Act, you can be sentenced to death for poaching, pickpocketing a shilling, or even cutting down trees.
- **Murder trials resemble a traveling circus.**
Major crimes are tried by the assize courts, which travel around the country, coming to town twice a year with crowds ready to witness justice by the gallows.
- **Medicine is becoming a profession.**
Male Doctors begin taking over the business of childbirth, replacing midwives.

SOULPEPPER & CROW'S PARTNERSHIP SUPPORTERS



CAST & CREATIVE TEAM

Cast

Mayko Nguyen Lizzy Luke	Raquel Duffy Sarah Hollis	Annie Luján Hannah Rusted
Bahia Watson Sally Poppy	Kyra Harper Sarah Smith	Natasha Mumba Ann Lavender
Olunike Adeliyi Judith Brewer	Fiona Highet Charlotte Cary	Liisa Repo-Martell Lizzy Luke (Alternate)
Ghazal Azarbad Peg Carter	Courtney Ch'ng Lancaster Emma Jenkins	Hallie Seline Helen Ludlow
Nadine Bhabha Kitty Givens	Cameron Laurie Frederick Poppy/Dr. Willis	Addison Wagman Katy Luke/Alice Wax
Brefny Caribou* Mary Middleton	Craig Lauzon Mr. Coombes	Oliver Dennis The Justice (Voice Only)

*Fight & Intimacy Captain

Creative Team

Lucy Kirkwood Playwright	Luke Reece Associate Director	Sam Hale Stage Manager
Weyni Mengesha Director	Anita Nittoly Fight & Intimacy Director	Scarlett Larry Assistant Stage Manager
Julie Fox** Set Designer	Jane Gooderham Dialect Coach	Kate Chubbs Apprentice Stage Manager
Michelle Tracey** Costume Designer	Joanna Falck Production Dramaturg	Alex Edwards Child Supervisor
Bonnie Beecher** Lighting Designer	Ben Kopp Music Director & Copyist	
Thomas Ryder Payne Sound Designer & Arranger	Sebastian Biasucci Howland Shadow Director	

Production Team

Andy Devries Head Carpenter	Greg Chambers, Jack Nighswander, Dan Jackobi Props Builder/Buyer	Erin Halls, Madeline Ius, Kalina Popova, Celina Westlake, Valerie Cameron Stitchers
Bill Stahl, Jo de Boer 1st Carpenter	Ellie Koffman Head of Wardrobe	Irene Ly, Leanna Cecchetto Dressers
Paul Boddum Head Scenic Artist	Claudia Matas Assistant Head of Wardrobe	Gunes Agduk Lighting Operator
Hilda Chu, Susanna Feng, Catalina Holguin, Dan Jackobi Scenic Painter	Sylvia Defend Cutter	Tristan Chung Audio Operator
Lisa Nighswander Head of Props	Jacqueline Robertson-Cull Head of Wigs	David Mallette Deck Hand

Content Warning: *THE WELKIN* contains scenes of violence and mature content, including domestic abuse and miscarriage, descriptions of hanging and sexual assault, child death, and strong language.

THE WELKIN was first performed at the National Theatre, in the Lyttleton Theatre on 15 January 2020.



Soulpepper Theatre is a member of the Professional Association of Canadian Theatres and engages professional artists who are members of Canadian Actors' Equity Association under the terms of the jointly negotiated Canadian Theatre Agreement



**Indicated designers on this production are represented by the Associated Designers of Canada, Local ADC659.

2 hours and 35 minutes, with intermission



LUCY KIRKWOOD is an acclaimed playwright and screenwriter. In 2009, Lucy's play *It Felt Empty When the Heart Went At First But It Is Alright Now* was produced by Clean Break Theatre Co. at the Arcola Theatre. The play was nominated for an Evening Standard Award for Best Newcomer and made Lucy joint winner of the John Whiting Award 2010. *NSFW* premiered at the Royal Court Theatre in 2012. *Chimerica*, premiered at the Almeida Theatre in 2013 and subsequently transferred to the West End, earning the Best New Play at the 2014 Olivier and Evening Standard Awards, as well as the Critics Circle Award and the Susan Smith Blackburn Award. Recent work includes *Mosquitoes*, presented by special arrangement with Manhattan Theatre Club, which opened at the National Theatre in summer 2017, and *The Children*, which premiered at the Royal Court, London, in 2016, opened on Broadway in December 2017 and was nominated for a Tony in the category of Best New Play. Lucy also writes for screen: she has written for *Skins* (Company Pictures), created and wrote *The Smoke* (Kudos / Sky 1), and is developing projects with Cowboy Films and Lenny Abrahamson. Her adaptation of *Chimerica* aired on Channel 4 in April 2019 and her mini-series *Adult Material* aired in October 2020 and was nominated for five BAFTAs. Her play *The Welkin* opened at the National in January 2020. Her plays *Maryland* and *This Is Not Who I Am* both premiered at the Royal Court Theatre in 2021 and 2023 respectively. Also in 2023, her adaptation of Roald Dahl's *The Witches* opened at The National Theatre, and her latest play *The Human Body* premiered at the Donmar Warehouse in 2024.



WEYNI MENGESHA has been the Artistic Director of Soulpepper Theatre Company since 2019. Celebrated for her groundbreaking work and community engagement, her directing credits span Canadian and international stages. Weyni is also a committed educator, mentor, and a producer of youth arts initiatives. In addition to Soulpepper, she has taught at the National Theatre School of Canada and the Canadian Film Centre. FOR SOULPEPPER: *Kim's Convenience* (2025, 2015 and 2012), *What the Constitution Means to Me* (2024); *Billie, Sarah and Ella: Revolutionary Women in Jazz* (2024 and 2023), *A Streetcar named Desire* (2024), *The Guide To Being Fabulous* (2023), *'Da Kink in my Hair* (2022), *Queen Goneril* (2022), *Pipeline* (2002), *Jesus Hopped the A-Train* (2020), *Father Comes Home From The Wars* (2016), *A Raisin in the Sun* (2008 and 2010). Other theatre credits include *Treemonisha* (Volcano Theatre/Tolive/Luminato/Soulpepper), *Power of Sail* (Geffen Playhouse), *Seven Spots on the Sun* (Rattlestick Theatre, NY), *Butcher* (Why Not/Mirvish), and *Bars and Measures* (Boston Court, Pasadena). Weyni is so grateful to be marking the end of her Soulpepper artistic directorship with this play and this incredible group of artists. She wants to thank Soulpepper staff, audiences and all the artists she has worked with for an incredible seven year journey.



OLUNIKE ADELIYI is a Canadian actress, writer, and producer of Nigerian and Jamaican descent. She is an alumni of the American Academy of Dramatic Arts in NYC. A Canadian Screen Award winner, Olunike continues to shine in projects bringing depth, power, and versatility to every performance across genres. SOULPEPPER 2025: *The Welkin*. FOR SOULPEPPER: *da Kink in my Hair*. OTHER THEATRE: *Macbeth* (Sterling), *The Atomic Tradition* (Sterling), *HER 2* (Nightwood). Film & Television: *Workin' Moms*, *The Expanse*, *American Gods*, *Revenge of the Black Best Friend*, *The Porter*, *Mike*, *She Never Died*, *The Parting Glass*, *Chaos Walking*, *Backspot*, *The Fire Inside*, *Village Keeper*, *Morningside*, *It Comes in Waves*, *Absolute Dominion*, *Youngblood*, *Inheritance*, and Edgar Wright's *The Running Man*. Thank you God Almighty and my mother Roxiana Adeliyi for bravely giving birth to a storyteller.



GHAZAL AZARBAD SOULPEPPER 2025: *The Welkin*, *The Comeuppance*. SOULPEPPER: *English* (2023), *The Seagull* (2020), *Wedding at Aulis* (2019), *La Bête* and *Innocence Lost* (2018). OTHER THEATRE: East Van Panto: *Little Mermaid* and *Alice in Wonderland* (Theatre Replacement); *Romeo and Juliet* (Bard); *Bunny* (Search Party); *Being Here: The Refugee Story* (Belfry); *Shakespeare in Love* (Bard); and *The Curious Incident of the Dog in the Night-Time* (Arts Club). FILM & TELEVISION: *Float* (Lionsgate), *Charmed* (CW), *Kim's Convenience*, *The Slowest Show* (CBC) OTHER: Writer and creator of *Tārof: a Persian Comedy*, *Dear Konstantin* (Audiobook on Spotify), and *REAL* (script). Two-time Jessie Awards nominee, recipient of the Hnatyshyn Foundation Award for Acting.



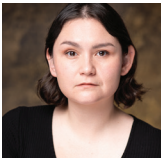
BONNIE BEECHER has created the lighting for over 400 productions for Theatre, Opera, and Dance across Canada and internationally. Her work for Soulpepper includes: *The Dubbyk*, *Angels in America*, *Awake and Sing*, *The Bald Soprano*, *Death of a Salesman*, *Three Penny Opera* and *The Lesson*. Recent productions include: *Mary Queen of Scots* (Scottish Ballet), *Major Barbara* (Shaw), *Lady Macbeth* (Dutch National Ballet), *A Streetcar named Desire* (Citadel/theatre Calgary), and *People, places and things* (Coal Mine). Upcoming projects include: *Cinderella* (Baller Ireland), *Procession* (National Ballet of Canada), *B.E.N.D* (Aszure Barton and artists), and *Robin Hood Panto* (Canadian Stage)



NADINE BHABHA is an award-winning writer/actor/producer from Toronto. Past theatre credits include *Hayavadana* (Soulpepper), *The Penelopiad* (The Grand Theatre), *Girls Like That* (Tarragon). Select TV credits: *Letterkenny* (Hulu/Crave), *The Holiday Shift* (CBS), *One More Time* (CBC), and *This Hour Has 22 Minutes* (CBC). TV writing credits include *This Hour Has 22 Minutes*, *Children Ruin Everything* and Crave's upcoming comedy *Slo Pitch*. She has three Canadian Screen Award nominations for Best Supporting Actor (*How to Fail As a Popstar*, *The Communist's Daughter*) and Best Writing for Sketch Comedy (*This Hour Has 22 Minutes*).



SEBASTIAN BIASUCCI SOULPEPPER 2025: *The Welkin*. FOR THE HOWLAND COMPANY: *Prodigal* (Associate Producer), *Entrances & Exits* (Marketing Manager). OTHER THEATRE: Acting Credits include *The Last Mammoth* (Good Old Neon), *A Midsummer Night's Dream* (Panoply Collective), *What A Guy: A Window Into Flavortown* (The Assembly Theatre), *Retreat* (Hart House Theatre), *String Quartet 14 in G Major* (Rock Bottom Movement). Producing credits include *The Children's Republic* (Harold Green Jewish Theatre Company), *Dead Elephants* (Good Old Neon), *Two Minutes to Midnight* (One Four One Collective), *A Christmas Carol Comedy* (No Porpoise Productions).

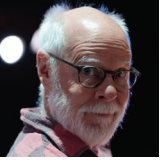


BREFNY CARIBOU is a performer, writer, and educator of Cree (Mathias Colomb Cree Nation)/Irish-settler descent based in Tkaronto. Holding an MFA in Acting from York University she loves reimaging traditional theatrical practices, telling Indigenous stories, and making people giggle. As a performer she has worked in TV/film on *Tallboyz* (CBC/Joanne), and *Mayor of Kingstown* (Paramount +/Isabelle) and in theatre across Turtle Island on projects such as *1939* (Canadian Stage), *The Tempest* (Theatre Rusticle/Buddies in Bad Times), *Otîhêw* (Shakespeare in Action), and completed 3 seasons at the Stratford Festival in productions of *Little Women* (Beth March), *All's Well That Ends Well* (Solider, Understudy), and *The Rez Sisters* (Zhaboonigan Peterson). Her solo show *Savage is a Word in the English Dictionary* had its world premiere at the 2025 Awaken Festival at Gwaandak Theatre in Whitehorse, YT. Brefny is going into her 4th year facilitating the Indigenous Arts Program at the Paprika Festival.



KATE CHUBB SOULPEPPER 2025: *The Welkin* (debut). OTHER THEATRE: *Untitled Flamingo Play* (rEvolver Festival), *In Real Life* (The Musical Stage Company), *CAEZUS* (Toronto Fringe), *Orfeo: l'anima del filosofo* (UofT Faculty of Music), *L'incoronazione di Poppea* (NUOVA Vocal Arts), *Choreographic Works*, *Edward II* (Performance at TMU), *Something Rotten*, *Head Over Heels* (TMTC). OTHER: Positions with Pride Toronto, Canada's Music Incubator, Granville Island Theatre District, and Carousel Theatre. Kate

is a graduate of the Performance Production program at TMU.



OLIVER DENNIS Soulpepper 2025: *Witch*, *Happy Days*. For Soulpepper: close to 100 productions with Soulpepper. He has had the opportunity to play Shakespeare and Moliere and Chekhov, Miller and Williams and Albee. Beckett, Ionesco, Orton. Simon. Sarah Ruhl and Suzan-Lori Parks and Tracey Letts. David French and Morris Panych/ Brenda Robins and Mike Ross/Sarah Wilson and Lee MacDougall and Vern Thiessen and Michael Shamata and Kevin Loring and Erin Shields. Shaffer, Storey, Stoppard, Frayn and Ayckbourn. To name some. Other recent productions include Fagin in *Oliver!* (Yes Theatre, Sudbury), *People, Places and Things* (Coalmine), *Waitress* (Capitol Theatre, Port Hope) *Fifteen Dogs* (Sadie Bronfman, Montreal), *Bremontown* by Gregory Prest (Next Stage Festival), *The Wonderful* by Luke Reece (Caravan Farm Theatre).



RAQUEL DUFFY SOULPEPPER 2025: *The Welkin*. FOR SOULPEPPER: *The Goat or Who is Sylvia*, *Spoon River*, *August: Osage County*, *Wedding at Aulis*, *Sisters*, *La Bête*, *Rose*, *Animal Farm*, *Of Human Bondage*, *Alligator Pie*, *It's a Wonderful Life*, *The Heidi Chronicles*, *The Accidental Death of an Anarchist*, *Noises Off*, *The 39 Steps*, *The Just*, *The Anger in Ernest and Ernestine*, *Idiot's Delight*, *The Barber of Seville*, *The Play's the Thing*, *The Crucible*, *You Can't Take it With You*, *Tartuffe*, *Angels in America*, *Perestroika*, *Death of a Salesman*, *The Odd Couple*, *The Royal Comedians*, *Window on Toronto*, *Oh What a Lovely War*, *(re)birth: ee Cummings in Song*. Graduate of the Soulpepper Academy. OTHER RECENT CREDITS: *Steel Magnolias* (The Capitol), *Forget About Tomorrow* (Here For Now), *Tide & Time* (Foster Festival), *Rosencrantz & Guildenstern are Dead* (Mirvish/ Neptune Theatre), *Harry Potter and the Cursed Child* (Mirvish). TV: *Ginny & Georgia*, *Reacher*, *The Most Dangerous Game 2*.



ALEX EDWARDS Production Assistant (Soulpepper, 2023 - Present), *The Master Plan* Dresser (Soulpepper, 2024), *Life After* Production Assistant (Yonge Street Theatricals, 2025).



JOANNA FALCK is the Literary Associate at Soulpepper Theatre. Soulpepper 2025: *The Welkin*. For Soulpepper: Production Dramaturg, *A Streetcar Named Desire*, Dramaturg, *What the Constitution Means to Me*. Other Theatre: Joanna was previously the Literary Manager at Tarragon Theatre and the Shaw Festival. As a freelance dramaturg, she has worked with companies including Royal Manitoba Theatre Centre, fuGen Asian Canadian Theatre, Nightwood Theatre, Tapestry New Opera Works, Studio 180, Arts

Club Theatre Company and Canadian Stage Company. Other: She was awarded the 2021 Honorary Membership Award from the Playwrights Guild of Canada.



JULIE FOX has been a production designer for theatre, dance and opera in Canada for over 20 years. SOULPEPPER 2025: *The Welkin*. FOR SOULPEPPER: *Endgame*, *The Play's The Thing*, *The Long Valley*. OTHER THEATRE: Stratford Festival, Shaw Festival, Crow's, Why Not Theatre, Tarragon Theatre, Buddies, Necessary Angel, Volcano, NAC, Segal Centre, Centaur, Citadel, Theatre Junction, and Manitoba Theatre Centre. She has received five Dora Awards for outstanding set design, and the Virginia Cooper Award for costume design. She is a graduate of the National Theatre School of Canada.



JANE GOODERHAM Select credits: Theatre: Stratford Festival (21 seasons); *Harry Potter and the Cursed Child* (Mirvish/Sonia Friedman); *War Horse* (Royal National Theatre/Mirvish); *Matilda* (RSC/Mirvish); *Lord of the Rings* (Mirvish); *My Name is Lucy Barton*, *The Lehman Trilogy*, *London Road* (Canadian Stage); *Fall On Your Knees* (NAC/Canadian Stage); *Infinite Life* (Coalmine); *The Lehman Trilogy* (Royal Manitoba Theatre Centre); *Oroonoko*, *Chair* (Theatre for a New Audience, New York) Television: *Star Trek: Strange New Worlds* (Paramount); *Good Sam* (CBS); *Reacher* (Amazon) Teaching: Head of Voice, National Theatre School of Canada; Birmingham Conservatory.



SAM HALE SOULPEPPER 2025: *The Welkin*, *Ladies of the Canyon*. FOR SOULPEPPER: *Casey and Diana*, *Detroit: Music of the Motor City*, *Pafumerie*, *Ma Rainey's Black Bottom*. OTHER THEATRE: *The Bidding War* (Crow's), *The Goat or, Who is Sylvia*, *Little Shop of Horrors* (Stratford), *Liars at a Funeral* (Drayton), *Job* (Coal Mine), *Prodigal*, *The Wolves* (Howland), *Jerusalem*, *Mr. Burns* (Outside the March), *Angels in America* (That Theatre Company/Buddies), *Fall For Dance North* (TO Live), Welcome Ceremony for the 2025 Invictus Games. Sam also serves as a stage management mentor at Toronto Metropolitan University.



KYRA HARPER SOULPEPPER 2025: *The Welkin*. FOR SOULPEPPER: *Copenhagen*, *Escaped Alone*, *Idomeneus*, *A Delicate Balance*, *Farther West*. OTHER THEATRE: *Infinite Life* (Coalmine), *Rockabye* (ARC), *Three Sisters* (Howland Company), *Long Day's Journey Into Night*, *Death of a Salesman* (Blue Bridge), *Medea*, *Calendar Girls* (Mirvish/MTC), *Her 2* (Nightwood), *The Rez Sisters* (Factory), *Vincent River* (Carthorse) *Pacamambo* (Canadian Rep), *Clean House* (ATP). FILM/TV: *Ed and Alfie* (Best Actress VIFA), *Hudson and Rex*, *Danger Next Door*, *Orphan Black*, *Too Close For Comfort*, *Heartland*, *Little Orphans*, *Hard Rock Medical*, *See*.



FIONA HIGHET SOULPEPPER 2025: *The Welkin* (debut). OTHER THEATRE: *Roberto Zucco* (Buddies in Bad Times), *Poison* (Coalmine Theatre), *Calendar Girls* (Mirvish/MTC), *Late Company* (Why Not Theatre), *The Eco Show* and *Insomnia* (Necessary Angel) and *The Little Years* (TPM). FILM & TELEVISION: *Late Bloomer*, *Law & Order Toronto*, *Diggstown*, *Strays*, *Bitten*, *Cardinal*. OTHER: Fiona also writes and directs for film and television. She is a graduate of the CFC Prime Time Television Program, and has made two award winning short films, *Smart* and *GoingGoing*.



BEN KOPP is a composer, actor, music director, accompanist and convocation name reader residing in Toronto. Ben is a 2019 graduate from TMU University's performance acting program and has been performing, music directing, and writing ever since. Selected Credits: *Iris (says goodbye)* (Music and Lyrics, Winner of the Adam's Prize for Musical Theatre/Best of Fringe); *Alligator Pie* (Soulpepper Theatre, Dora Award); *Killing Time: A Game Show Musical* (Music and Lyrics, Dora Nomination); *Alice in Wonderland* (Bad Hats Theatre) Follow him on Instagram @ben___kopp.



COURTNEY CH'NG LANCASTER Soulpepper 2025-26: *The Welkin, Witch* (director). For Soulpepper: *Innocence Lost, Idomeneus, Alligator Pie, The Dining Room, Incident at Vichy, Blood Wedding, Spoon River, Of Human Bondage, Eurydice, Barber of Seville, Marat/Sade, Idiot's Delight, The Crucible, Death of a Salesman, Royal Comedians, Dirt*. Other: Directing credits at Shaw, Crows, The Howland Company, Tarragon, York University, Sheridan. Acting credits at Shaw, Canadian Stage, The Capitol, Tarragon, Native Earth, Blue Bridge, Citadel, and beyond. Courtney is an assistant professor at York University, and a founding member of The Howland Company. Upcoming: *take rimbaud* with Buddies in Bad Times/The Howland Company.



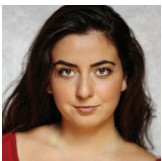
SCARLETT LARRY SOULPEPPER 2025: *The Welkin, Detroit: Music of the Motor City*. FOR SOULPEPPER: *The Secret Chord, Kim's Convenience*. OTHER THEATRE: *Get That Hope, Wedding Band, Richard II, Little Women, I Am William* (Stratford Festival), *Letters From Max* (Necessary Angel), *Julius Caesar, The Wolves* (Crow's Theatre), *Kiviuq Returns: An Inuit Epic* (Qaggiavuut!, Tarragon Theatre, National Theatre of Greenland), *The Stage Manager's Guide to Dating Assholes* (Edinburgh Festival Fringe). EDUCATION: BFA in Theatre Production and MA in Art History from York University. UPCOMING: *Moonlight Schooner* and *You, Always* (Canadian Stage).



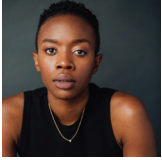
CAMERON LAURIE SOULPEPPER 2025: *The Welkin* (Debut). FOR THE HOWLAND COMPANY & CROW'S THEATRE: *Heroes of the Fourth Turning, Prodigal*. FOR THE HOWLAND COMPANY: *Three Sisters, Casimir & Caroline, Punk Rock*. OTHER THEATRE: *The Drawer Boy, The Donnelly's Trilogy, Saving Graceland, The Trials of Maggie Pollock, Our Beautiful Sons* (Blyth Festival), *A Little Closer* (The Vault), *The Merchant of Venice* (Shakespeare Bash'd), *This Feels Like the End* (Theatre Aurinko/Next Stage). Film & Television: *The Shape of Water* (Fox Searchlight), *I Will Find You* (Netflix). OTHER: Cameron is a founder and artistic leader of The Howland Company.



CRAIG LAUZON Originally from Ottawa, ON, of mixed settler and Anishinabe descent. SOULPEPPER 2025: *The Welkin*. FOR SOULPEPPER: *Where the Blood Mixes* (2022); *Orlando* (2018); *Trudeau and the FLQ/Trudeau and Levesque* (2015) OTHER THEATRE: *Truck* (Factory); *Detroit* (Coalmine); *Midsummer Night's Dream* (Stratford); *A Comedy of Errors* (Thousand Island Playhouse); *The Drawer Boy* (Theatre Passe Muraille); *Tales of an Urban Indian* (Talk is Free Theatre) *Thunderstick* (Persephone Theatre); *King Lear* (NAC). FILM & TELEVISION: *Ithaqua; Sheriff Country; Trickster; Adult Adoption; Murdoch Mysteries; The Guilt Free Zone; Fool Canada; Air Farce; The Ron James Show; Beyblade and Beyblade: The Movie*.



ANNIE LUJÁN SOULPEPPER 2025: *The Welkin*. FOR SOULPEPPER: *King Lear, Peggy Pickett Sees The Face of God*. OTHER THEATRE (SELECTED): *Dance Nation* (Upcoming - Coal Mine/OTM), *Last Landscape* (Bad New Days), *A Little Closer* (The Vault), *Comedy of Errors* (The Grove), *Storybook Search* (Bad Hats). Annie is the co-creator/performer of the duo clown show *MONKS* (Theatre Centre, Crow's, County Stage, Toronto Fringe). She is an alumni of the 2022 Soulpepper Academy and Concordia University.



NATASHA MUMBA is a Zambian-born, Toronto-based, multi-disciplined artist. SOULPEPPER 2025: *The Welkin, Copperbelt*. OTHER THEATRE: *School Girls, or the African Mean Girls Play* (Obsidian, Nightwood); *Henry V, The Adventures of the Black Girl, Alice in Wonderland, Dracula, Hound of the Baskervilles* (Shaw Festival); *Silver Arrow* (Citadel); *Trout Stanley* (Factory); *Measure for Measure, Much Ado About Nothing* (Canadian Stage); *Middletown* (Crows) *The Millennial Malcontent* (Tarragon)

FILM & TELEVISION: *The Handmaid's Tale* (MGM); *The Last of Us* (HBO); *Y: The Last Man* (FX); *Beacon 23* (AMC); *Matlock* (CBS); *Five Days At Memorial* (APPLE +), *The Abandons* (NETFLIX). @Tashamum



MAYKO NGUYEN SOULPEPPER 2025: *The Welkin*. OTHER THEATRE: *Beautiful Man* (Nightwood); *Salt-Water Moon* (Factory, WhyNot); *TomorrowLove* (Outside The March); *Passion Play* (Sheep No Wool, Convergence Theatre, Outside The March). FILM/TELEVISION: *Hudson & Rex, Titans, Killjoys, ReGenesis*, among others. Mike, Theo and Lou - I LOVE you (THANK YOU)



ANITA NITTOLY SOULPEPPER 2025: *The Welkin, Kim's Convenience*. FOR SOULPEPPER: *WildWoman, Three Sisters, Virgin Trial*. OTHER THEATRE: Stratford Festival 2024/25 seasons; *Wights, The Bidding War, Bad Roads, Prodigal* (Crow's); *Roberto Zucco, Angels in America* (Buddies); *Fat Ham, Who's Afraid of Virginia Woolf?, Fairview, Hamlet* (CanStage); *Goodnight Desdemona, Midsummer Night's Dream* (Perchance); *Groundhog Day* (YES); *CRAZE* (Tarragon); *The Retreat* (Imago); *Truth* (YPT); *JCS* (Here For Now); *Hamlet* (The Rose); *Sexual Misconduct of the Middle Classes* (TIP), *Fall on Your Knees* (CanStage/NAC); *The Last Wife, The 39 Steps, Successions* (Centaur Theatre). FILM & TV: *Law & Order Toronto, SEE, Star Trek: Discovery, Star Trek: Starfleet Academy, The Handmaid's Tale, The Boys, What We Do in the Shadows, Star Wars: Outlaws*.



LUKE REECE is the Associate Artistic Director at Soulpepper Theatre, and works as a playwright, performer and director across Canada. SOULPEPPER 2025: *The Welkin*. FOR SOULPEPPER: Associate Director: *Wildwoman*, Associate Artist: *Bad Parent*, Assistant Director: *Pipeline*, Dramaturg: *Six Characters in Search of an Author*, Writer: *1851: Spirit and Voice* (with Myseum if Toronto). OTHER THEATRE: Associate Director: *Anne of Green Gables* (The Stratford Festival), Writer/Performer: *As I Must Live It* (Theatre Passe Muraille), Writer/Director: *The Wonderful* (Caravan Theatre) FILM & TELEVISION: Writer: *Notice* (Obsidian & CBC Arts). OTHER: Luke is one of Toronto's most decorated slam poets, and has represented the country internationally.



LIISA REPO-MARTELL is an award-winning stage and screen actor and one the founding members of Artists for Real Climate Action. She has also written a new adaptation of Chekhov's *Uncle Vanya* for Crows Theatre and Ibsen's *Hedda Gabler* for Coal Mine Theatre and was one of writer/producers of the satirical web series, *The Big Oil Alliance*. Acting credits include: Theatre: *Uncle Vanya* (Crows Theatre), *Towards Youth* (Crows Theatre) *A Beautiful View* (Festival Players) *What a Young Wife Ought to Know* (2b Theatre) *The Boy in the Moon* (Crows Theatre), *The Watershed* and *Seeds* (Porte Parole), *Other Desert Cities* (The Citadel Theatre) *Creditors* (Coalmine Theatre), *Happy Place*, *Uncle Vanya*, *Antigone*, *The Lesson*, *School for Wives*, *Top Girls* (Soulpepper) *Eternal Hydra* (Crow's Theatre) *Midsummer Night's Dream* (Stratford Festival) *King Lear* (Stratford Festival). Film/T.V. *Hudson and Rex*, *Saint Pierre*, *Happy Place* (Sienna Films), *The Umbrella Academy*. Upcoming: *You, Always* (CanStage).



THOMAS RYDER PAYNE SOULPEPPER 2025: *The Welkin*. FOR SOULPEPPER: *The Master Plan*, *The Guide To Being Fabulous*, *The Seagull*, *Da Kink In My Hair*, *Queen Goneril/King Lear*, *ART*, *The Brothers Size*, *Little Menace*, *The Royale*, *Oratorio*, *Orlando*, *Picture This*, *Father Comes Home From The Wars*, *Incident At Vichy*, *The Anger In Ernest and Ernestine*, *La Ronde*, *Kim's Convenience*, *Ghosts*. OTHER THEATRE: Designs for Stratford, Shaw, Mirvish, CanStage, Crows, Tarragon and many others.



HALLIE SELINE FOR SOULPEPPER 2025: *The Welkin* (Debut). FOR THE HOWLAND COMPANY: *Heroes of the Fourth Turning*, *Prodigal*, *The Wolves* (with Crow's Theatre), *Three Sisters*, *Casimir and Caroline*, *Punk Rock*, *52 Pick-Up*. OTHER THEATRE: *The Merchant of Venice*, *As You Like It*, *Twelfth Night*, *Romeo and Juliet* (Shakespeare BASH'd); *The Farm Show: Then & Now*, *Resort to Murder*, *The Donnelly's: A Trilogy* (Blyth Festival); *Prairie Nurse* (Lighthouse). Upcoming: *take rimbaud* (Howland/ Buddies in Bad Times) FILM/TV: *Everything's Going to be Great* (Lionsgate), *Fellow Travelers* (Showtime). OTHER: Hallie is a Founding Artistic Leader of The Howland Company. She has won a Dora Mavor Moore Award and a Toronto Theatre Critics Award.



MICHELLE TRACEY SOULPEPPER 2025: *The Welkin*. FOR SOULPEPPER: *WILDWOMAN*, *Wedding at Aulis*, *Sisters*, *Waiting for Godot*, *Crawlspac*, Soulpepper Academy Graduate. OTHER THEATRE: *Big Stuff* (Baram & Snieckus / Crow's), *Garden of Vanished Pleasures* (Soundstreams), *Roberto Zucco* (Buddies), *Candida*, *The Clearing* (Shaw), *Every Little Nookie*, *Nathan the Wise* (Stratford), *Indecent* (Studio 180/Mirvish); *Behind the Moon*, *This Was the World*, *Much Ado About Nothing* (Tarragon Theatre).



ADDISON WAGMAN is thrilled to be a part of this production. SOULPEPPER: Debut. OTHER THEATRE: *Beaches* (Theatre Calgary), *Annie* (Stratford), *A Christmas Story* (Aquarius), *Chris, Mrs.* (Winter Garden), *Joseph....* (Drayton). Voiceover: Peanuts, Wild Kratts, Vida the Vet, Audible. Addi would like to thank the amazing creative team, cast and crew. Special thank you to Shari, Mommy, Daddy, Meme, Jiji, F & H.




BAHIA WATSON SOULPEPPER 2025: *The Welkin*, *The Comeuppance*, *Summer and Smoke*. FOR SOULPEPPER: *A Raisin in the Sun*; *The Virgin Trial*, *The Last Wife* (Stratford/Soulpepper). OTHER THEATRE: *Uncle Vanya*, *The Seagull*, *Someone Else* (Crow's); *shaniqua in abstraction* (Crow's/paul watson), *MASHUP PON DI ROAD* (Why Not/paul watson), *pomme is french for apple* (paul watson), *MASHUP ting!* (Public Theatre/Joe's Pub), *Bakkhai*, *Diary of Anne Frank* (Stratford); Film and Television: *The Handmaid's Tale*, *Star Trek: Discovery*, *The Expanse*, *Various Animation*.

SPECIAL THANKS

**THE COMPANY OF THE WELKIN WOULD LIKE TO THANK THE FOLLOWING INDIVIDUALS
FOR SUPPORTING THIS PRODUCTION:**

Katie Seline	Ruth Goodwin
Sasha Polienko	Chelsea Preston
Jing Cui	Will Parry
Ben Sohi	Soulpepper’s City Youth Academy
Jon Britton	Soulpepper’s Summer Mixtape Program
Arthur Davies	The Village at Black Creek
Keavy Lynch	Wendy German
Malika Daya	Keely Maddock
Laura Baxter	Jennifer D’Attolico
Veronica Hortigüela	Jackie Maxwell
Kristin Thompson	
Amaka Umeh	



**Proud to support
Soulpepper**

We're working together Soulpepper.

It's just one of the ways we are helping
to open doors for a more inclusive
and sustainable tomorrow.

td.com/tdreadycommitment

**TD READY
COMMITMENT**

© The TD logo and other trademarks are the property of The Toronto-Dominion Bank or its subsidiaries.



PROUD PRESENTING SPONSOR OF

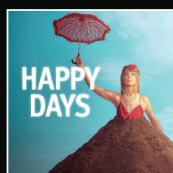
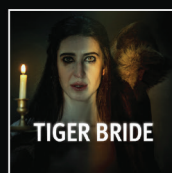
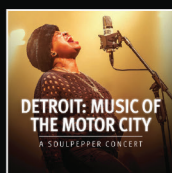
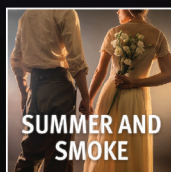
Soulpepper's free 25 & under program

We live in a country with a rich and deep appreciation
for arts and culture, and we're committed to fund programs
that enable Canadians of all means and backgrounds
to enjoy the very best.



Soulpepper

**Sixteen bold stories. One unforgettable season.
All for a stronger city.**



BECOME A SUBSCRIBER & SEE MORE, FOR LESS!

SOULPEPPER SUBSCRIBERS **SAVE UP TO \$630 ON TICKETS** AND RECEIVE EXCLUSIVE BENEFITS TO EXPERIENCE THIS SEASON LIKE NO ONE ELSE.

SOULPEPPER.CA

(416) 866-8666

50 TANK HOUSE LANE (DISTILLERY DISTRICT)

TORONTO'S NEXT MUSICAL SENSATION!

From the team behind *Natasha*, *Pierre* & *The Great Comet of 1812*



Begins September 9 at Crow's Theatre

Octet

Music, lyrics, book, and
vocal arrangements by Dave Malloy

Directed by Chris Abraham • Music Director Ryan deSouza • Choreography by Cameron Carver

A Musical About How The Internet Broke Our Brains



YOUR INBOX HAS YOUR DISCOUNT ▶

Check your post-show
email to save 20%

CROWSTHEATRE.COM (647) 341.7390

CROW/S

Soulpepper

**MUSICAL
STAGE.CO.**

Zorana Sadiq, Hailey Gillis, Alicia Ault, Giles Tomkins, Ben Carlson, Jacqueline Thair, Andrew Broderick, Damien Atkins. Photo: Dahlia Katz

UP NEXT WITH THE HOWLAND COMPANY:

THE WORLD PREMIERE

TAKE RIMBAUD

BY SUSANNA FOURNIER

DIRECTED BY TED WITZEL

MAY 6-23, 2026

THE
HOWLAND
COMPANY

+

buddies
IN BAD TIMES THEATRE

photo of Susanna Fournier, photography • creative direction by Fran Chudnoff, styling by CC Calica, makeup by Rahneil Branton.

"THERE ARE AMBITIOUS INDEPENDENT THEATRE-MAKERS
AND THEN THERE'S SUSANNA FOURNIER."

»TORONTO STAR«

BOOK
NOW

howlandcompanytheatre.com

take rimbaud is produced
with the support of the



Canada Council
for the Arts

Conseil des arts
du Canada

SOULPEPPER SUBSCRIBERS SAVE AT CROW'S THEATRE!



This season marks the beginning of a new partnership between Soulpepper Theatre and Crow's

Theatre. This means your Soulpepper subscription now opens the door to more stages, more stories, more nights out. Enjoy exclusive savings at Crow's Theatre and discover even more theatre to love.

**SUBSCRIBERS SAVE 30-40%
ON OUR CO-PRODUCTIONS
WITH CROW'S**

2025.26 SEASON



Click for full
season details



Octet

SEP 9 – OCT 12, 2025



**Summer
and
Smoke**

FEB 3 – MAR 1, 2026

SOULPEPPER SUBSCRIBERS SAVE 20% ON ALL OTHER CROW'S PRODUCTIONS

The Veil

SEP 17 – OCT 12, 2025

**The
Christmas
Market**

NOV 4 – NOV 30, 2025

**Rogers v.
Rogers**

DEC 2 – DEC 28, 2025

**Pu Songling:
Strange Tales**

JAN 13 – FEB 1, 2026

**The
Surrogate**

FEB 24 – MAR 22, 2026

**Mary, Mary,
Mary, Mary**

APR 7 – MAY 3, 2026

**The
Division**

APR 21 – MAY 10, 2026

**Primary
Trust**

MAY 26 – JUN 21, 2026

SOULPEPPER SUPPORTERS — WE GRATEFULLY ACKNOWLEDGE THE SUPPORT OF THE FOLLOWING:

LEAD SEASON SUPPORTER

Sylvia Soyka

MAJOR INDIVIDUAL SUPPORT

**DIANE BLAKE +
STEPHEN SMITH**

MUSIC SPONSOR



CORPORATE SPONSORS



FOUNDATION SUPPORT

**The Catherine and Maxwell
MEIGHEN FOUNDATION**

**METCALF
FOUNDATION**

**Pitblado Family
Foundation**



**The Joan & Clifford
Hatch Foundation**



**William & Nona
Heaslip Foundation**

SOULPEPPER ACADEMY



Sylvia Soyka

**Kingfisher
Foundation**



**The Norman & Margaret
Jewison Charitable Foundation**

MEDIA AND IN-KIND SPONSORS



GOVERNMENT SUPPORT



Crow's Theatre gratefully acknowledges all the donors who support our ongoing creation of theatre and the development of Canadian artists in our East End home.

LEAD SEASON SPONSOR



LEAD SEASON PATRON

**SYLVIA
SOYKA**

VISIONARY CIRCLE

Donald Guloien
& Irene Boychuk

The William & Nona
Heaslip Foundation

The Hon. David &
Shelley Peterson

Sandra &
Jim Pitblado

Seaton McLean
& Sonja Smits

Anonymous (4)

CORPORATE & FOUNDATION CHAMPIONS

The Gail Asper
Family Foundation



CIBC CAPITAL
MARKETS



The Thor E. & Nicole Eaton
Family Charitable Foundation



Meighen Family
Foundation

**METCALF
FOUNDATION**

Cathy & John Phillips,
Northpine Foundation



Pyxis Investment
Corporation



TD Securities

Tripp/Smith
Family Foundation



MAJOR DONORS

Marilyn &
Charles Baillie

Gord Currie &
Robin Heintzman

Nancy
Lockhart

R.B. (Biff) &
Sue Matthews

The Meerkamper
Family

Gerald Lunz &
Rick Mercer

Julia & Gilles
Ouellette

Laura Dinner &
Richard Rooney

Bob &
Terry Smith

Anonymous
(2)

GOVERNMENT SUPPORT



Thank You!

DONORS

Soulpepper is very grateful to all of the individuals, corporations, foundations, and government agencies who contribute to its continued growth and success.

Donor support allows Soulpepper to offer employment to artists, to cultivate an environment of creation and exploration, and to enrich the community with great theatre.

The generosity of our many supporters makes everything we do at Soulpepper possible.

TO MAKE A DONATION

VISIT: soulpepper.ca/donate **CALL:** 416 203 6264 x188 **EMAIL:** development@soulpepper.ca

Corporate & Foundation Supporters

\$200,000+

The Slaughter Family Foundation*
The Catherine & Maxwell Meighen Foundation

\$75,000 - \$124,999

BMO Financial Group*
CIBC*
George Cedric Metcalf Charitable Foundation
RBC Foundation*
Scotia Wealth Management*
Sun Life Financial*
TD Bank Group*

\$25,000 - \$74,999

Canada Life*
The Keg Spirit Foundation
Kingfisher Foundation
Lindy Green Family Foundation
The William & Nona Heaslip Foundation
Power Corporation of Canada
Ray Ferris Springboard Fund
The Sabourin Family Foundation
Polar Foundation

\$10,000 - \$24,999

The Joan & Clifford Hatch Foundation*
The McLean Foundation
Middlefield Resource Funds*
Paul Barber Foundation
The Sabourin Family Foundation
\$5,000 - \$9,999
Bulmash-Siegel Foundation

The Browning Watt Foundation*
Distillery Restaurant Corporation
The Henry White Kinnear Foundation*
The Norman & Margaret Jewison Foundation*
Pitblado Family Foundation*
Mason Law
Moez & Marissa Kassam Equity Fund
Morgan Meighen & Associates*
Torkin Manes LLP
The William & Nona Heaslip Foundation

Up to \$4,999

Balfour Bowen Family Foundation*
Geist Family Foundation*
Jackman Foundation*
John Family Fund
Philip Fox Fund
The Racioppo Family Foundation
The Nick & Lynn Ross Charitable Foundation*
The Kit Skelly Foundation

Individual Supporters

Major Gifts

\$100,000+

Diane Blake & Stephen Smith*
The Estate of Susan Brenninkmeyer
Gary & Donna Slaughter*
Sylvia Soyka*

\$50,000+

Vanessa Morgan & Steve Wolf*
Sylvia Soyka*
Kathleen & Bill Troost*

Artistic Director's Circle

\$25,000+

Deb Barrett & Jim Leech*
Victor & Maureen Dodig*
Dave Friesema & Sanyo Lue-Kim
Kevin & Roger Garland, C.M.*
Sonny Goldstein & Dr. Betty Rozendaal
Melissa Kennedy
Sanjay Nakra & Deepa Daryanani
James O'Sullivan
& Lucie Vallée
Karrin Powys-Lybbe
& Chris von Boetticher*

Soul Circle

\$10,000+

Marilyn & Charles Baillie*
Robin Cardozo & Jeff Richardson*
Hugh Furneaux*
Jim Fleck
Robert Foster, C.M.
& Julia Foster, C.M.
Dana Lafarga
Karey Lunau
Bill Morneau & Nancy McCain
Sandra Pitblado, C.M.
& Jim Pitblado, C.M.

Heart & Soul

\$5,000+

Rob & Teresa Brouwer*
David Brown*

SOULPEPPER SUPPORTERS

Melissa Clarke & Tom Lederer
Beverley Flynn
Robin Heintzman & Gordon
Currie*
Greg Kiessling & Pam Isaak*
Sheena Macdonald & Phil
Schmitt*
Maja Neable
The Pat & Tony Adams Freedom
Fund For The Arts
Mazi Raz
Aaron Sanderson & Kevin
Keystone
Helen Sinclair
Martha Tory
Cindy Tripp
Alan Walker*
Sally Wright & Gavin MacKenzie*

Curtain Club

\$2,500+

Elspeth Bowler*
Nicholas Chambers
John Chang & Elizabeth Lasserre
Shawn Cooper
David & Yvonne Fleck
Mark & Catherine Graham
Mary Hallward
Shira Hart
Kent James
Judith John
Jalye Mengesha
& Meselu Gebrehiwot
Christopher Lee
& Paula Mosbrucker
Daniel McCarthy*
Anil Mohan
Gordon & Elaine Pitts*
Alicia Rose
2 Anonymous Donors

Friend

\$250 - \$999

Lynn & David Abernethy
Abiola Akinyemi
Kerri Anderson
Jay Armitage
Gideon Arthurs & Erin Sheilds
Wendy Balfour
Carol Barber
Guy Beaudin
Neil Betteridge
Theresa Boyle*
Mary Lou Brock*
Graham Brunke*
Chris Bryne & Anda Whiting
Helena Bzonkova*
Margaret Anne Cain
Alberta G. Cefis
Claudia Colas

Wendy Cole
Gayle Corcoran
Catherine Cornell & Declan Lane*
David Craig & Donna Piccinin-
Craig
Joan Cranston*
Carol Dalgado
Shirley Dawe
Don DeBoer & Brent Vickar*
Steven D. Donohoe*
Laura Drake
Debbie Dumaesq
Steven Farber
Wendy Evans & Chris Elson
John & Shari Ezyk
Steven Farber
Bill & Rosemary Fillmore
Barbara Fingerote*
Neil Foster
David & Margaret Fox-Revelt
Donald Fraser & Judythe Little
Linda Galen & William Draper
Kamala Jean Gopie
Doreen Gryfe*
Sarika Gundu
Eva Haggerty
Anne & William Harker*
Susan Helwig
Lawrence & Beatrice Herman*
Paul Hickey
Joe Hoja
Richard Horner*
Naomi & Sandy Horodezky*
Clive Houseman
Kishwar Iqbal
Alison Janzen
Barry & Cathy Joslin
Dagmar Kanzle
Soussanna Karas
Marcia & Paul Kavanagh*
Olanre Kayode
Robert Kee
Greg Kelner
Don & Francie Kendal*
Sheryl Kennedy
Hans Kluge
Farah Kurji
Anita & Leon Lapidus
Dale Lawr*
Anne Layton
John Leavitt
Victoria Lee

Benefactor

\$1,000+

Robin Alter & Martin Yaffe
Sarah Bay-Cheng
Michelle Beveridge*
Helen Burstyn
Martha & George Butterfield*
Karen Cheah*
Jane & Bob Clapp
Rita & Mark Daniel*
Denise Donlon*

SOULPEPPER SUPPORTERS

Valentia Lee-Brotherton
Karen Leitner
Brad Lepp
Linda Lewis
Maureen Littlejohn
Oliver & Gillian Long*
Martha Loewen
Larry Lubin
Joanna Martin
John Martin & Sampa Bhadra
Linda Massey
Kelly McDonald
& Greg Sigurdson*
Linda McGuire
Micheline McKay & Richard
Comparey*
Mark McLean
Susan Moellers*
Dorothy Morari & James Mryglad*
Margaret & Gary Mousseau
Mary Jane Mossman & Brian
Bucknall*
Steve Munro*
Paul Murphy*
Penny Noble
Brian O'Leary*
Jeremy Opolsky
Nancy Palk & Joseph Ziegler
Christine Pearce
Stephen Phillips*
Diane Pitblado
Archie Platt
Harold Povilaitis*
Kerry Rittich
Sylvia Schmid
Catherine Seton
Phillip Silver
Ryan Singh
Larry Smith*
Terry Smith
Patricia Stowe
Jill Strimas
Carol Strom
Carol Swindell
W. Michael Than*
Doug & Gail Todgham*
Karen Turner
Stephen Uzielli & Robin
Siegerman
Teresa Walsh

John Wolf
Hersh Zeifman, In Memory of
Nina Hope Wright
Marc Zwelling

Soulpepper extends our special
gratitude to members of our
Soul Mates program, who donate
monthly to support our artistic &
educational programming.

Soulpepper Legacy Circle

*The following people have
generously arranged bequests to
Soulpepper:*

*Robin Cardozo
Roger Garland
Ken Gingerich & Michael Oakes
Shira Hart
Anne Louise Layton
Claude Marchand
Jenny Tan
Michael Than
7 anonymous friends of
Soulpepper*

Women Centre Stage

Deb Barrett & Jim Leech
Maureen & Victor Dodig
Kiessling/Isaak Family
Jaqui Parchment
Karrin Powys-Lybbe
& Chris von Boetticher
The Pat & Tony Adams
Freedom Trust

Women Centre Stage

Co-Chairs (2020 - Present):

Dana Lafarga
Sanjay Nakra

If you have any questions about
your recognition or support, please
contact us at 416-203-6264 x188 or
development@soulpepper.ca

Individuals recognized for
donations made between
Jan 1 2024- Jan 1 2025

*Donors who have given to
Soulpepper for 10+ consecutive years
+ Soulpepper staff and Artist donors

DONORS

The Howland Company is grateful to the following donors for their generous support this season. Without donor support, our work would not be possible.

Thank you for believing in the future of innovative, independent theatre and investing in our mission of fostering a new wave of theatre-makers and theatre-goers.

TO MAKE A DONATION

VISIT: howlandcompanytheatre.com/support-us/ **EMAIL:** info@howlandcompanytheatre.com

THE WELKIN Production Support



\$5,000
The McLean Smits Family Foundation

The Reading Group Venue Sponsor
Society Clubhouse

\$1,000 - \$5,000
Rona Ghanbari James Graham
Raj Kothari
Brian O'Malley
Peter Wismath* Anonymous

\$500 - \$999
Valerie Fast
Ronald Graham
Anita Gupta
Stephanie Stevens

\$250 - \$499
John Van Burek
Jennifer Cerny
Teri Worthington Coombes* Kate
Fast Mimi Graham
Graham Laurie Wilhelmina & Joe

Laurie Blyth Printing Inc Mary
Rella Maria Ricossa
Steven Sager Pamela Stevens
Stone River Productions Inc.
Sophia Sunderji
Charlotte Toal Katherine Wilson*

\$100 - \$249
Brian Beagle
Christopher Bozek
Susan Coyne
Mary Davis
Barbara Fingerote*
Karen Franklin
Renalee Gore
Yvonne Gore
Susanna Gouinlock
Carol Hornsby
Adrian Horwood
Tracey Hoyt
Omar Husain
Kelsey Jenkins
Courtney Ch'ng Lancaster
Sheila Moll*
Stephen Oliver Kathleen Payne
Joe Pinizzotto Milos Popovic
Tasha Potter Vinay Sarin
Rosamund Small
Voices Rock Canada
Sophie Welsman*

If you have any questions about your recognition or support, please contact us at info@howlandcompanytheatre.com.

Individuals recognized for donations made between Jan 1 2024- Sept 1, 2025

* Monthly Donor

Paolo Santalucia

Artistic Director

Gideon Arthurs

Executive Director

Administration & Artistic

Ece Aydin

Executive Support and Project Lead

Luke Reece

Associate Artistic Director

Joanna Falck

Literary Associate

Frank Cox-O'Connell

Slaight Family Director of Music

Producing

Jonathan Heppner

Executive Producer

Robyn Hoja

Producer

Meghan Froebelius

Producer

Julia Carrano

Associate Producer

Production

Patricia Vinluan

Interim Senior Production Manager

Maya Royer

Production Manager

Leslie Hernandez

Technical Director

Nicholas Beardsley

Assistant Technical Director

Rhett Costin

Assistant Technical Director

Alex Edwards

Production Assistant

Andy DeVries

Head Carpenter

Lisa Nighswander

Head of Properties

Paul Boddum

Head Scenic Artist

Ellie Koffman

Head of Wardrobe

Development

Anne Rawn

Director of Development

Raveena Mahabir

Officer Philanthropy

Anastasia Gordon

Senior Officer, Foundations and Corporate Partnerships

Marketing

Lauren Naus

Senior Manager of Marketing and Sales

Riaz Charania

Director of Marketing and Communications

Duaa Zahra

Digital Engagement Coordinator

Education & Community

Rohan Kulkarni

Director of Education & Community Engagement

Jacqui Arntfield

Community Activator

Maricris Rivera

Education & Community Programs Coordinator

Finance

Michelle Beveridge

Director of Finance

Maria Larina

Finance Manager

Shishi Chen

Payroll Coordinator

Nilsa Rivero

Accounting Coordinator

Rachel Shen

Accounts Payable Coordinator

Fang Tian

Accounting Coordinator

Soulpepper Founding Members

Martha Burns

Susan Coyne

Ted Dykstra

Michael Hanrahan

Stuart Hughes

Diana Leblanc

Diego Matamoros

Nancy Palk

Albert Schultz

Robyn Stevan

William Webster

Joseph Ziegler

Soulpepper

Board of Directors

Robin Cardozo (Chair)

Beverley Flynn

Julia Foster

Dave Friesema

Roger Garland

Sonny Goldstein

Sarika Gundu

Veni Iozzo

Judith John

Melissa Kennedy

Dana Lafarga (Vice-Chair)

Karey Lunau

Anil Mohan

Sanjay Nakra

Maja Neable

Alicia Rose

Aaron Sanderson

Martha Tory

Cindy Tripp

Alan Walker

Yasmin Warsame

Patron Services

Karen Turner

Director of Services & Operations

Matthew Costin

Patron Services Manager

Melanie Ferreira

Café Manager

Micah Bucholtz

Operation Services Coordinator

Kenzie Delo

Chloe MacPherson

Duty Managers

Adrian Chevalier

Shayna Linds

Peter Naccarato

Senior Patron Services
Representatives

Adrian Chevalier

Nicholas Eddie

Shayna Linds

Riley Kelk

Peter Naccarato

Pasanun Songsaeng

Yohannes Taye

Sarah Hotke

Wilfred Storey

Sabrina Gomes

Patron Services Representatives

Ryan Bagley

Sabrina Gomes

Henry Oswald Peirson

Sarah Hotke

Peter Naccarato

Floor Captains

Ryan Bagley

Colleen Didur

Shaneill Floyd-Wlazlak

Jeffrey Johnston

Riley Kelk

Diane Kingstone

Henry Oswald Peirson

Pasanun Songsaeng

Kale Dewitt

Sabrina Gomes

Jin Xu

Laura Dae

Nikki Battiston

Ushers

Jessica Wasserman

Senior Café Associate

Kirk Escriba

Enoch Franz

Dev Mallick

Abhijit Nair

Yohannes Taye

Yezhi Kuo

Baristas

I.T.

Fernando Arriola

I.T. Manager

Sheila Kearney Miller

Tessitura Administrator

Andrew Ho

I.T. Systems Administrator

Building Operations

Greg Poulin

Manager of Building Operation
& Production

Cole Vincent

Building Operator

Niamh Cunningham-Closs

Building Supervisor

Technicians

Gunes Agduk

Andres Castillo-Smith

Dalton Villeneuve-Marin

David Mallette

Young Centre Board of Directors

Robert Brouwer (Chair)

Eileen De Courcy

Lachlan MacQuarrie

Michael Herrera

Beverley Flynn

Leslie Hernandez

Alan Walker

Thank You!

Young Centre

Thanks to our wonderful legion
of Young Centre volunteers
for their continued support!

Young Centre Facilities Funding:



Canadian
Heritage

Patrimoine
canadien



Ontario
Trillium
Foundation



Fondation
Trillium
de l'Ontario



All front of house staff – floor captains, patron service representatives, baristas and ushers - working for the Young Centre for the Performing Arts are represented by Local B-173 of the International Alliance of Theatrical Stage Employees.

House and Stage Technicians employed by the Young Centre for the Performing Arts are represented by Local 58 of the International Alliance of Theatrical Stage Employees.

Crow's Theatre is Toronto's home for bold, contemporary performance. Distinguished by our commitment to artistic rigour and our dedication to Canadian artists, Crow's is known for our powerful and provocative productions. Since opening Streetcar Crowsnest in 2017, our purpose-built home in the east end, Crow's has produced a series of acclaimed premieres that have resonated widely with audiences and critics alike shattering box office and attendance records. Now in our 41st year, Crow's is a vital voice in the Canadian arts landscape creating unforgettable theatre that illuminates the central narratives of our times.

Chris Abraham
Artistic Director

Sherrie Johnson
Executive Director

Christopher Manousos
Associate Artistic Director

Peter Fernandes
Artistic Associate

Katie Pounder
General Manager

Heather Landon
Senior Producer

Beth Wong
Producer

LJ Savage
Director of Production and Facilities

Jeremy Hutton
Production Manager

Ryan Borshuk
Technical Director

Amber Rea
Assistant Technical Director

Jay Hines
Kim Schaedlich
Zach White
House Technicians

Andrew McDowell
Director of Marketing and Communications

Ryan Hildebrandt
Senior Marketing Manager

Jacob Whibley
Graphic Designer

Suzanne Cheriton, Red Eye Media
Media Relations

Laura Langlois
Director of Philanthropy

Natalie Sandassie
Philanthropy Manager

Karen Abdelsaid
Philanthropy Officer

Kasia Swintak
Philanthropy Services Associate

Walter Ho
Finance Manager

Claudia Padilha
Accountant

Jordaan Mason
Manager of Ticketing & Venue Services

Peter Kelly
Manager of Sales & Front of House

Rebecca Bauer
Natalie Scagnetto
Box Office and Front of House Supervisors

Bonnie Duff
Gabriella (Gabbie) Kosmidis
Box Office and Front of House Swing Supervisors

Samantha Barker, Tushar Dalvi,
Tianna Dang, Bonnie Duff, Lara
Hamburg, Elyssa Hsu, Anthony
Jhade, Madeline Kennedy,
Gabriella (Gabbie) Kosmidis,
Gloria Mampuya, Nia Osei, Becky
Plotnek, Theodore Zachariah
Box Office Representatives

Ted Hallett
Bar Manager

Siobhan Gallagher
Navtej Sandhu
Bartenders

CROW'S THEATRE BOARD OF DIRECTORS

Prakash Amarasooriya
Josef Bornbaum
John Brodhead
Gordon Currie
Gabe Gonda
Heather Jessiman
Anne Maggisano
Gurbani Marwah
R.B. (Biff) Matthews
Seaton McLean
Max Meighen
Jonathan Nehmetallah
Margaret Nelligan, Board Chair
Michael Paris
Wendy Pitblado
Greg Reed, Treasurer
Nancy Tremblay, Secretary
Nancy Lockhart, Chair Emerita

THE HOWLAND COMPANY STAFF AND BOARD

The Howland Company is one of Toronto’s leading independent theatre companies that strives for innovation on and off stage.

The Howland Company strives for innovation on and off the stage. We are an artist-led and art-driven theatre company, dedicated to the production of electric stories that speak to the world and the times in which we live. Through an agile, collective-leadership model, Howland aims to build new operating structures that empower its artists with agency, skills, and growth opportunities. We seek to challenge and inspire our audiences through productions, training and community initiatives, fostering a new wave of theatre makers and theatre goers.

For THE WELKIN:

Hallie Seline
Producer & Director of Marketing

Cameron Laurie
Producer

THE COMPANY:

Ruth Goodwin
Artistic Leadership

Sam Hale
Artistic Leadership

Courtney Ch'ng Lancaster
Artistic Leadership

Cameron Laurie
Artistic Leadership

Hallie Seline
Artistic Leadership

Sebastian Biasucci
Associate Member

Steven Hao
Associate Member

Jareth Li
Associate Member

**BOARD
OF DIRECTORS**

Benjamin Dermer
Rona Ghanbari
James Graham
Michael Joseph
Steven Sager
Stephanie Stevens



ART OPENS MINDS.

Proud to support the storytellers who open our minds,
inspiring us all to think bigger, together. **That's Enriched Thinking.®**

Scotia Wealth Management.®

STAY CONNECTED AND UP-TO-DATE

SOULPEPPER THEATRE



[SOULPEPPER.CA](https://soulpepper.ca)



[YOUTUBE.COM/
SOULPEPPERTHEATRE](https://youtube.com/soulpeppertheatre)



[@SOULPEPPERTHEATRE](https://www.instagram.com/soulpeppertheatre)



[@SOULPEPPERTHEATRE](https://www.tiktok.com/@soulpeppertheatre)



[@SOULPEPPER](https://twitter.com/soulpepper)



[FACEBOOK.COM/
SOULPEPPERTHEATRE](https://facebook.com/soulpeppertheatre)

CROW'S THEATRE



[CROWSTHEATRE.COM](https://crowstheatre.com)



[FACEBOOK.COM/
CROWSTHEATRE](https://facebook.com/crowstheatre)



[@CROWSTHEATRE](https://www.instagram.com/crowstheatre)



[YOUTUBE.COM/
CROWSTHEATRETORONTO](https://youtube.com/crowstheatretoronto)



[@CROWSTHEATRE](https://twitter.com/crowstheatre)



[@CROWSTHEATRE](https://www.tiktok.com/@crowstheatre)

THE HOWLAND COMPANY



[HOWLANDCOMPANY
THEATRE.COM](https://howlandcompanytheatre.com)



[FACEBOOK.COM/
THEHOWLANDCOMPANYTHEATRE](https://facebook.com/thehowlandcompanytheatre)



[@THEHOWLANDCOMPANY](https://www.instagram.com/thehowlandcompany)



[YOUTUBE.COM/
THEHOWLANDCOMPANYTHEATRE](https://youtube.com/thehowlandcompanytheatre)



[@THEHOWLANDCO](https://twitter.com/thehowlandco)



[@THEHOWLANDCOMPANY](https://www.tiktok.com/@thehowlandcompany)

The artists and staff of Soulpepper, Crow's Theatre, The Howland Company and the Young Centre for the Performing Arts acknowledge the original caretakers and storytellers of this land —the Mississaugas of the Credit, the Haudenosaunee, the Anishinaabe, and the Wendat First Nations. We commit to honouring and celebrating their past, present and future.