

|Soulpepper|

Witch

WRITTEN BY **Jen Silverman**

DIRECTED BY **Courtney Ch'ng Lancaster**





In the year 1621 on the outskirts of London in the Parish of Edmonton, a woman named Elizabeth Sawyer was brought to trial under the Witchcraft Act of King James I. She was accused of holding visitations with Satan in the form of a dog, and casting spells leading to the death of her neighbour. Sawyer is recorded as being an impoverished mother who was physically disabled with a stoop and a single functioning eye. During her trial villagers and her own husband spoke against her; even so the jury was undecided and so a group of women were called to search her body for the mark of the devil. The women found a small teat-like growth on her lower body, and so Sawyer was convicted. Her trial was a sensation and great crowds came to witness her hanging at London's infamous Tyburn Gallows in April of that year.

By December of 1621, playwrights Dekker, Ford and Rowley had mounted a play about the event, *The Witch of Edmonton*. To do so, they appended the details of Sawyer's trial to separate storylines about Frank Thorney, an ambitious young farmer attempting to protect his inheritance through marriage despite already being married to a lower-class maid, and a about Cuddy Banks, a naïve Morris dancer who delights in meeting the devil dog but proves too innocent to corrupt. The playwrights were wise to capitalize on Sawyer's tale: plays that vilified covens and witches were popular owing to a fascination with the supernatural held by many including the King. However *The Witch of Edmonton* is subversive; it takes a surprisingly sympathetic view of Elizabeth Sawyer by portraying her as cruelly tormented and ostracized by the villagers at the outset. It is the cruelty she experiences that entices the devil to offer the powers of witchcraft and grant her the opportunity for vengeance, an offer she gladly accepts. The play questions whether it is the forces of social exclusion that drive individuals to reprehensible acts.

Jen Silverman describes adaptation as “choosing a different shaped window to look at what’s happening right now.” With *Witch*, Silverman mines a Jacobean tragicomedy to comment on our present and doesn't shy away from depicting the absurd banality and despair that pervades our era of late-stage capitalism. However, *Witch* also brings forth a shocking amount of love from a play about devilish acts. It is love infused with grief, love misdirected, repressed, twisted and denied but also love as the conduit for a radical act of hope.

Courtney Ch'ng Lancaster

Director, *Witch*

Co-Producer, The Witch Collective

Cast

Tantoo Cardinal
Elizabeth Sawyer

Shawn Ahmed
Frank Thorney

Thomas Mitchell Barnet
Cuddy Banks

Oliver Dennis
Sir Arthur Banks, Fight Captain

Nicholas Eddie
Scratch

Heeyun Park 박희윤
Winnifred

Creative Team

Jen Silverman
Playwright

Courtney Ch'ng Lancaster
Director

Nick Blais*
Set Designer

Ting-Huan 挺歡
Christine Urquhart*
Costume Designer

Jareth Li*
Lighting Designer

Olivia Wheeler*
Sound Designer & Composer

Anita Nittoly
Fight & Intimacy Director

Monica Dottor
Choreographer

Charlotte Dennis
Shadow Director

Laura Baxter
Stage Manager

Troy Taylor
Assistant Stage Manager

Alexander McGarry
Sheridan Stage Management
Placement Student

Shawn Ahmed,
Courtney Ch'ng Lancaster
The Witch Collective
Co-Producers

Production Team

Andy DeVries
Head Carpenter

Bill Stahl
1st Carpenter

Paul Boddum
Head Scenic Artist

Lisa Nighswander
Head of Props

Greg Chambers
1st Builder/Buyer

Hilda Chu, Arielle White
Scenic Artists

Ellie Koffman
Head of Wardrobe

Claudia Matas
Assistant Head of Wardrobe

Malcolm LeBlanc
Cutter

Jacqueline Robertson-Cull
Head of Wigs

Erin Halls
1st Hand

Irene Ly
Dresser

David Mallette
Lighting Operator

Jason Shindle
Audio Operator

Tom Everett
Deck Hand

“WITCH” is presented by arrangement with
Concord Theatricals on behalf of Samuel French, Inc.
www.concordtheatricals.com

WITCH is produced with support
by The Witch Collective

“WITCH” was commissioned by Writers Theatre through
the Literary Development Initiative, with the generous support
of David and Mary Winton Green, and the World Premiere was
presented at Writers Theatre in Glencoe, IL; Michael Halbers-
tam, Artistic Director, Kathryn M. Lipuma, Executive Director.

Front Cover: Pictured—Tantoo Cardinal, Set Design by Nick Blais,
Costume Design by Ting-Huan 挺歡 Christine Urquhart,
Lighting Design by Jareth Li, Photo by Dahlia Katz



Soulpepper Theatre is a member of the
Professional Association of Canadian
Theatres and engages professional artists
who are members of Canadian Actors' Equity
Association under the terms of the jointly
negotiated Canadian Theatre Agreement



**Indicated designers on this
production are represented by
the Associated Designers of
Canada, Local ADC659.

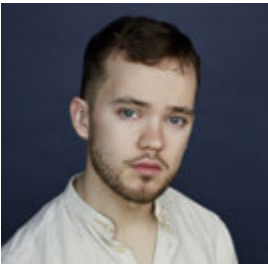
Running time: 95 mins.
No intermission



TANTOO CARDINAL has worked on over 130 projects over a 50-year career. Awards include: Earle Grey Award, the Order of Canada, CBC Hall of Fame, Governor General's Lifetime Achievement Award, a star on Canada's Walk of Fame, Honorary Doctorates from 5 Universities. Select Credits Film: Kaillers of the Flower Moon, Legends of the Fall, Dances with Wolves, Black Robe, Falls Around Her, Wind River, The Grizzlies, Where The Rivers Flow North, Maina, Chasing Shakespeare, Eden. TV: Stumptown, 3 Pines, Marvel's Echo, Avatar: Last of the Air Benders, SEE, Westworld, Longmire, Mohawk Girls, Frontier, Blackstone, Lonesome Dove, Nobody's Girls, Godless, Penny Dreadful. Theatre: "Gertrude - "Hamlet," Regan - "King Lear", Pelajia - "The Rez Sisters", "The Inheritance"



SHAWN AHMED SOULPEPPER 2025: Witch OTHER: In 2020, David Alan Anderson introduced me to this play. What followed has been a five-year labour of love to bring it to life. Not possible without the constant encouragement from my wonderful wife, Rong Fu, and my friend and collaborator, Courtney Ch'ng Lancaster, whose brilliance and commitment carried us over every developmental hurdle. Grateful to Erika Morey, an early partner and producer on this journey and, of course, Jen Silverman for writing this dark and witty play. Next up, Shawn will be starring in season 4 of the hit Paramount+ series Skymed.



THOMAS MITCHELL BARNET is an actor and musician from Edmonton, Alberta. Theatre credits include Scorpius in Harry Potter and the Cursed Child (Mirvish); Treasure Island, Romeo and Juliet, Shakespeare in Love (Stratford). TV credits include Sam Lesser in Locke and Key (Netflix), Devil in Disguise (Peacock), Murdoch Mysteries (CBC). Outside of theatre, Thomas is a musician and performs and self produces music under the name Haystacks. He also hosts house concert, which you are all invited to. Thomas is a graduate of the Soulpepper Academy. This is for Mom, Dad, Frankie, Halley, Jacob, Emma, Henry, Linnet, and the babies on the way :).



LAURA BAXTER was born in Grimsby, and raised in Kingston, ON. For Soulpepper: Pipeline, 27 Club, Dirt, Jitters Other Theatre: Sweat, Love and Information, Venus in Fur, 9 seasons at Dream in High Park (Canadian Stage); Indecent, Oslo, My Name is Asher Lev, My Night With Reg, You Will Remember Me, God of Carnage (Studio 180); Black Boys, Arigato Tokyo, Obaaberima, The Maids (Buddies in Bad Times Theatre); Actually (Obsidian/ Harold Green); The Story, Tails From the City (Common Boots Theatre); Trout Stanley, Little Pretty and the Exceptional (Factory Theatre); 11:11, Elle (Theatre Passe Muraille); Soliciting Temptation (Tarragon Theatre) Thank you to my amazing wife Shawn, and daughter Amari for your unwavering love and support.



NICK BLAIS designs across Canada in all manner of discipline and venue: creating thematic, impactful designs, and transforming unconventional spaces into immersive, dramatic environments. As Head of Design for Outside the March, Nick has been working to expand the reach and importance of design in storytelling and placemaking. Nblaisdesign.com For Soulpepper: Witch, Medusa and Death of Walt Disney(OtM), Table for Two(Obsidian), Wildwoman. Recent credits Include: Rainbow on Mars (Outside the March), Seven Methods of Killing Kylie Jenner (Obsidian Theatre), Drawer Boy (Thousand Islands); Erased (Open Heart), Fulfillment Centre (Coal Mine), Things I Know to be True (Mirvish).



CHARLOTTE DENNIS Charlotte Dennis is an actor, creator and on deep dark nights, a mover of furniture in an apartment that is too small for the amount of stuff it has collected. For Soulpepper: Witch, Soulpepper Academy 2023, A Christmas Carol. Other Theatre: Job (Coal Mine Theatre, Dora Nomination); Steel Magnolias (Capitol Theatre); Spycraft (A Yarn or Two Collective); What Rough Beast (Centaur Theatre); Martyr (ARC); Boston Marriage (Headstrong Collective); Dimples (Smock Alley Theatre, Dublin) Film/TV include: Murdoch Mysteries (S17); Forever Young; Alex & Isla (MayDay Pictures). Charlotte is a founding associate of The Vault Creation Lab in Toronto and a graduate of the acting program at The National Theatre School of Canada



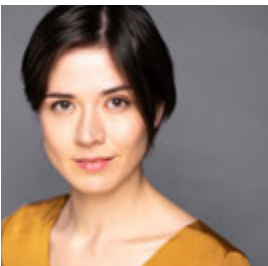
OLIVER DENNIS Oliver was born in Montreal and raised in Southern Illinois. Soulpepper 2025: Witch, Happy Days. For Soulpepper: close to 100 productions with Soulpepper. He has had the opportunity to play Shakespeare and Moliere and Chekhov, Miller and Williams and Albee. Beckett, Ionesco, Orton. Simon. Sarah Ruhl and Suzan-Lori Parks and Tracey Letts. David French and Morris Panych/Brenda Robins and Mike Ross/Sarah Wilson and Lee MacDougall and Vern Thiessen and Michael Shamata and Kevin Loring and Erin Shields. Shaffer, Story, Stoppard, Frayn and Ayckbourn. To name some. Other recent productions include Fagin in Oliver! (Yes Theatre, Sudbury), People, Places and Things (Coalmine), Waitress (Capitol Theatre, Port Hope)15 Dogs (Sadie Bronfman, Montreal) Bremen Town by Gregory Prest (Tarragon Theatre), The Wonderful by Luke Reese(Caravan Farm Theatre).



MONICA DOTTOR is an 12X DORA MAVOR MOORE* nominated Actor/Director/Choreographer/Writer/Designer. and a 4X recipient. Monica completed her MFA in Theatre Performance/Creation/Direction THEATRE: JANICE ALMIGHTY (CompanyBlonde) A Blow in the Face, The Penelopiad* (Nightwood), BEARS* (Punctuate) THE OTHER (Company Blonde), In the Fire, TWEET TWEET,* Flora & Fauna, CIRCUS SESSIONS (Femmes Du Feu), ROSE*, Idomeneus, Eurydice, MARAT/SADE* (Soulpepper) The Overcoat, A Midsummer Night's Dream, The Middle Place (Canadian Stage Company), SCRATCH, Featuring Loretta, Chekhov's Shorts. SHREK (YPT), METIS NUTRACKER (Company Blonde/Punctuate), TV/FILM: Interview With the Vampire SkyMed, 8 Bit Christmas, Orphan Black, Everything is Going to Be Great, LUNE, Picture Day, Star Falls, Murdoch Mysteries, Rookie Blue, Saving Hope. UPCOMING: WITCH (Soulpepper), CICADAS (NAC/Tarragon), SCHOOLHOUSE (4th Line Theatre) www.monicadottor.com



NICHOLAS EDDIE is a performer and theatre creator based in Toronto. Productions that Nicholas has been involved in have been nominated for a total of 25 Dora Awards and in December Nicholas was named one of Glenn Sumi's top 10 theatre artists of 2025. On screen, Nicholas can be seen as Kreel in the new season of *Twisted Metal* (Peacock). Nicholas is thrilled to make his debut at Soulpepper in the extraordinary role of Scratch. Select theatre credits include: Peter (Bug, Elkabong and King Black Box), Worker (Last Landscape, Bad New Days); Man (ONE NIGHT ONLY, duhdumduhdum productions); Helena (A Midsummer Night's Dream, Theatre Rusticle); Puppeteer (Wozzeck, Canadian Opera Company); Clown (Italian Mime Suicide, Bad New Days). instagram: [nicholas_eddie](https://www.instagram.com/nicholas_eddie)



COURTNEY CH'NG LANCASTER grew up in Antigonish, NS. Soulpepper 2025-26: The Welkin, Witch (director). For Soulpepper: Innocence Lost, Idomeneus, Alligator Pie, The Dining Room, Incident at Vichy, Blood Wedding, Spoon River, Of Human Bondage, Eurydice, Barber of Seville, Marat/Sade, Idiot's Delight, The Crucible, Death of a Salesman, Royal Comedians, Dirt. Other: Directing credits at Shaw, Crows, The Howland Company, Tarragon, York University, Sheridan. Acting credits at Shaw, Canadian Stage, Tarragon, Native Earth, Blue Bridge, Citadel, and beyond. Courtney is an assistant professor at York University, and a founding member of The Howland Company. Upcoming: Take Rimbaud with Buddies in Bad Times/The Howland Company.



JARETH LI Born in Singapore, Jareth is a stage designer now based in Toronto, by way of Calgary. He has a love for new work that examines identity politics, culture, and heritage. Recent design credits include: *Prince Caspian*, *The Orphan of Chao* (Shaw Festival); *Every Little Nookie*, *Sense and Sensibility* (Stratford Festival); *Disney's Frozen*, *Matilda*, *Kim's Convenience*, *Controlled Damage* (Grand Theatre); *Vinyl Cafe The Musical*, *A Midsummer Night's Dream* *A 70's Musical*, *Jersey Boys*, *Ring of Fire* (Citadel Theatre); *Top Dog / Underdog* (Canadian Stage); *The Last Timbit* (Gut Creative); *Peter's Final Flight* (Ross Petty Productions); *Vierge*, *Prairie Nurse* (Factory Theatre). In addition to his artistic practice a stagecraft instructor at York University. He believes strongly in mentorship and creating opportunity for upcoming generations of designers. Online @ Jareth.Li



ALEXANDER MCGARRY Alex is a student in his third year of Sheridan's Technical Production program, and he is beyond excited for the chance to work on WITCH! Select previous theatre credits include: *Into The Woods* (Sheridan), *Potato Potato* (Theatre Passe Muraille), *All That She Wrote* (Theatre Passe Muraille), *Writer's Showcase 2025* (Sheridan, Factory), and *Big Fish* (Sheridan). Much love to the whole WITCH team for welcoming them on this journey!



ANITA NITTOLY was born in exotic Windsor, ON. SOULPEPPER 2025: *The Comeuppance*, *The Welkin*, *Kim's Convenience*. FOR SOULPEPPER: *WildWoman*, *Three Sisters*, *Virgin Trial*. OTHER THEATRE: Stratford Festival 2024/25 seasons; *Wights*, *The Bidding War*, *Bad Roads*, *Prodigal* (Crow's); *The Green Line*, *Roberto Zucco*, *Angels in America* (Buddies); *Slave Play*, *Fat Ham*, *Who's Afraid of Virginia Woolf?*, *Fairview*, *Hamlet*, *Fall on Your Knees* (CanStage); *Goodnight Desdemona*, *Midsummer Night's Dream* (Perchance); *Groundhog Day* (YES); *CRAZE* (Tarragon); *The Retreat* (Imago); *Truth* (YPT); *JCS* (Here For Now); *Hamlet* (The Rose); *Sexual Misconduct of the Middle Classes* (TIP); *The Last Wife*, *The 39 Steps*, *Successions* (Centaur Theatre). FILM & TV: *Law & Order Toronto*, *SEE*, *Star Trek: Discovery*, *Star Trek: Starfleet Academy*, *The Handmaid's Tale*, *The Boys*, *What We Do in the Shadows*, *Star Wars: Outlaws*.



HEEYUN PARK 박희윤 was raised in Edmonton and born in South Korea. SOULPEPPER 2025: WITCH. OTHER THEATRE: Natasha, Pierre and the Great Comet of 1812 (Mirvish; Crow's and Musical Stage Company), Into the Woods (Koerner Hall), MONEY (WYRD Prod.), I Was Unbecoming Then (NextStage), La Bête (Talk is Free Theatre).

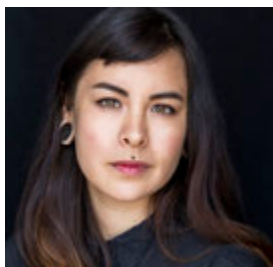


JEN SILVERMAN is a playwright, novelist and screenwriter. Plays include: The Roommate (Broadway: The Booth Theatre; Regionally: Williamstown Theatre Festival, Actor's Theatre of Louisville Humana Festival, Steppenwolf, South Coast Repertory Theatre, etc.); Highway Patrol (The Goodman); Spain (Second Stage Theater); Collective Rage: A Play in 5 Betties (Woolly Mammoth, MCC, Southwark Playhouse London); The Moors (Yale Repertory Theatre, The Playwrights Realm) and Witch (Writer's Theatre, The Geffen, The Huntington). Books include: the debut novel We Play Ourselves, story collection The Island Dwellers and novel There's Going to be Trouble from Random House. Silverman also wrote the bestselling narrative podcast The Miranda Obsession for Audible, starring Rachel Brosnahan.

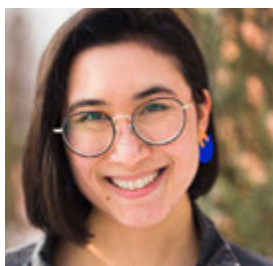
Silverman is a three-time MacDowell Fellow, a member of New Dramatists and a Scholar of Note at the American Library in Paris. They write for TV and film, including Tales of the City (Netflix) and Tokyo Vice (Max). Their OSCAR® qualifying short film Troy screened at 70 festivals internationally, including the 2023 Sundance Film Festival, and is featured online in The New Yorker's Screening Room. Honors include fellowships from the New York Foundation for the Arts, the Lower Manhattan Cultural Council, the National Endowment for the Arts and the Guggenheim. More info at www.jensilverman.com.




TROY TAYLOR was born and raised in Keswick, ON. FOR SOULPEPPER: What the Constitution Means to Me (2024), It's a Wonderful Life (2016). OTHER THEATRE: Troy works as a Stage Manager in Toronto for dance, theatre, and live events. He's worked for the National Ballet of Canada, Volleyball World, Yonge Street Theatricals, Soulpepper Theatre, Fall for Dance North, Canadian Stage, Ross Petty Productions, The Shaw Festival, Dance Ontario, Nightwood Theatre, Tarragon Theatre, Mirvish, Human Body Expression, and The Stratford Festival. When not at work, he likes to spend his time at the park with his dog Jupiter, and partner Craig.



TING-HUAN 挺歡 CHRISTINE URQUHART Ting is a Taiwanese British Designer and collaborator whose work questions narrative structures and viewpoints through a visually driven interrogation, the body as politics and getting audiences out of black box mentality to be witnesses to a different kind of event. Her training is in Product Design and Fine Art sculpture and painting. You will have recently seen my work as Set and Costume Designer for 'Blues for an Alabama Sky' (Shaw), 'Wicked Nix' (YPT) and 'Craze' (Tarragon.). Current projects include Costume Design for 'The Hobbit' (Stratford) and Set Design for 'You, Always' (Canadian Stage.) www.urquhartdesign.com @tinghuanchristineurquhart



OLIVIA WHEELER is a mixed-race Chinese Canadian sound designer and composer. SOULPEPPER 2025: The Comeuppance, Witch. FOR SOULPEPPER: Alligator Pie, De Profundis: Oscar Wilde (2024), The Walk-Up (Academy 2023), Associate Sound Designer for Bad Parent (2022). OTHER THEATRE: Forgiveness, Cymbeline (Stratford), The Secret to Good Tea (Grand/NAC), Romeo and Juliet, Playing Shylock (Canadian Stage), Octet, The Bidding War (Crow's), Here Lies Henry, Armadillos (Factory Theatre), Mad Madge (Nightwood), The Fixing Girl (Young People's Theatre), Infinite Life (Coal Mine), Between a Wok and a Hot Pot (Cahoots), ECHO (Next Stage). Thank you to Maria Jimenez (Thee Soreheads) and Heeyun Park for your vocals off and onstage. www.oliviagwheeler.com.



**Proud to support
Soulpepper**

We're working together Soulpepper.

It's just one of the ways we are helping
to open doors for a more inclusive
and sustainable tomorrow.

td.com/tdreadycommitment

**TD READY
COMMITMENT**

© The TD logo and other trademarks are the property of The Toronto-Dominion Bank or its subsidiaries.



PROUD PRESENTING SPONSOR OF

Soulpepper's free 25 & under program

We live in a country with a rich and deep appreciation
for arts and culture, and we're committed to fund programs
that enable Canadians of all means and backgrounds
to enjoy the very best.



SOULPEPPER SUPPORTERS — WE GRATEFULLY ACKNOWLEDGE THE SUPPORT OF THE FOLLOWING:

**LEAD SEASON
SUPPORTER**

Sylvia Soyka

**MAJOR INDIVIDUAL
SUPPORT**

**DIANE BLAKE +
STEPHEN SMITH**

**MUSIC
SPONSOR**



**MAJOR FOUNDATION
SUPPORT**

**The Catherine and Maxwell
MEIGHEN FOUNDATION**

CORPORATE & PROGRAM SPONSORS



FOUNDATION SUPPORT

**METCALF
FOUNDATION**



**The Joan & Clifford
Hatch Foundation**



**William & Nona
Heaslip Foundation**

**Ray Ferris
Springboard Fund**

SOULPEPPER ACADEMY



Sylvia Soyka

**Kingfisher
Foundation**



**The Norman & Margaret
Jewison Charitable Foundation**

MEDIA AND IN-KIND SPONSORS



GOVERNMENT SUPPORT



Thank you to our supporters: Anonymous, Vanessa Morgan and Steve Wolf, Kathleen and Bill Troost, Deb Barrett and Jim Leech, Robin Cardozo and Jeff Richardson, Victor and Maureen Dodig, Dave Friesema and Sanyo Lue-Kim, Kevin and Roger Garland, C.M., Sonny Goldstein and Dr. Betty Rozendaal, Melissa Kennedy, Sanjay Nakra and Deepa Daryanani, James O'Sullivan and Lucie Vallée, Karrin Powys-Lybbe and Chris von Boetticher, and many more.

DONORS

Soulpepper is very grateful to all of the individuals, corporations, foundations, and government agencies who contribute to its continued growth and success.

Donor support allows Soulpepper to offer employment to artists, to cultivate an environment of creation and exploration, and to enrich the community with great theatre.

The generosity of our many supporters makes everything we do at Soulpepper possible.

TO MAKE A DONATION

VISIT: soulpepper.ca/donate **CALL:** 416 203 6264 x188 **EMAIL:** development@soulpepper.ca

CORPORATE & FOUNDATION SUPPORTERS

\$200,000+

The Slight Family Foundation*
The Catherine & Maxwell
Meighen Foundation

\$75,000+

BMO Financial Group*
CIBC*
George Cedric Metcalf
Charitable Foundation
RBC Foundation*
Scotia Wealth Management*
Sun Life Financial*
TD Bank Group*

\$25,000+

Canada Life*
The Keg Spirit Foundation
Kingfisher Foundation
Lindy Green Family Foundation
The William & Nona Heaslip
Foundation
Power Corporation of Canada
Ray Ferris Springboard Fund
The Sabourin Family Foundation
Polar Foundation

\$10,000+

The Joan & Clifford Hatch
Foundation*
The McLean Foundation
Paul Barber Foundation
Pitblado Family Foundation*

\$5,000+

Bulmash-Siegel Foundation
The Browning Watt Foundation*
Distillery Restaurant Corporation
The Henry White Kinnear
Foundation*
Jackman Foundation*
The Norman & Margaret Jewison
Foundation*
Moez & Marissa Kassam
Equity Fund
Morgan Meighen & Associates*
Torkin Manes LLP

Up to \$4,999

Balfour Bowen Family
Foundation*
Geist Family Foundation*
John Family Fund
Philip Fox Fund
The Racioppo Family Foundation
The Nick & Lynn Ross
Charitable Foundation*
The Kit Skelly Foundation

INDIVIDUAL SUPPORTERS

MAJOR GIFTS

Anonymous
Vanessa Morgan & Steve Wolf*
Sylvia Soyka*
Kathleen & Bill Troost*

ARTISTIC DIRECTOR'S CIRCLE

Deb Barrett & Jim Leech*
Robin Cardozo
& Jeff Richardson*
Victor & Maureen Dodig*
Dave Friesema & Sanyo Lue-Kim
Kevin & Roger Garland, C.M.*
Sonny Goldstein
& Dr. Betty Rozendaal
Melissa Kennedy
Sanjay Nakra & Deepa Daryanani
James O'Sullivan
& Lucie Vallée
Karrin Powys-Lybbe
& Chris von Boetticher*

SOUL CIRCLE

Marilyn & Charles Baillie*
Hugh Furneaux*
James D. Fleck, C.C.
Robert Foster, C.M.
& Julia Foster, C.M.
Dana Lafarga
Karey Lunau
Bill Morneau & Nancy McCain
Sandra Pitblado, C.M.
& Jim Pitblado, C.M.

HEART & SOUL

Rob & Teresa Brouwer*
David Brown*
Melissa Clarke & Tom Lederer
Beverley Flynn
Robin Heintzman
& Gordon Currie*
Nicola Hockin
Judith John
Kiessling/Isaak Family*

SOULPEPPER SUPPORTERS

Gerald Lunz & Rick Mercer
Sheena Macdonald
& Phil Schmitt*
Luke McCain
Maja Neable
The Pat & Tony Adams Freedom
Fund For The Arts
Mazi Raz
Aaron Sanderson
& Kevin Keystone
Helen Sinclair
Martha Tory
Cindy Tripp
Alan Walker*
Sally Wright & Gavin MacKenzie*

CURTAIN CLUB

Anonymous (2)
Elspeth Bowler*
Nicholas Chambers
John Chang & Elizabeth Lasserre
Shawn Cooper
David & Yvonne Fleck
Mark & Catherine Graham
Mary Hallward
Shira Hart
Kent James
Jalye Mengesha
& Meselu Gebrehiwot
Christopher Lee
& Paula Mosbrucker
Ian and Dorothy Macdonald
Daniel McCarthy*
Anil Mohan
Gordon & Elaine Pitts*
Alicia Rose
Almos Tassonyi
& Maureen Simpson

BENEFACTOR

Anonymous
Robin Alter & Martin Yaffe
Gideon Arthurs & Erin Sheilds+
Lisa Balfour-Bowen
Sarah Bay-Cheng
Michelle Beveridge+
Helen Burstyn, C.M.
Martha & George Butterfield*
Karen Cheah*
Jane & Bob Clapp
Rita & Mark Daniel*

Richard Di Gioacchio
Denise Donlon*
Charmain Emerson
Russell & Carol Finch*
Martha Fisher
Steve & Mariann Geist
Ken Gingerich & Michael Oakes*
Jamie Goad
Sari Goldenberg*
Michael Griffiths
Paul & Vicki Hand*
Rob Harper*
Vic & Marion Hepburn
Ellen Hill
Mohamed Khaki
Elaine Kierans
& Shawn McReynolds*
Shelley Kirkbride
Raj & Shaila Kothari*
Ian & Dorothy Macdonald*
Robert Mason
Kit & Barbara Moore
Ed & Cindy Nowina*
Jason Oordg
Ann Savege*
Andrew Sriver
Ivor & Renee Simmons*
Jennifer & Greg Thompson
Sunanda Vaidheesh
Tony & Mary van Straubenzee*
Daniel Weinzweig
Joan & Robert Weppler
Greg Wilkie
Jan Wong

FRIEND

Lynn & David Abernethy
Abiola Akinyemi
Kerri Anderson
Jay Armitage
Tyler Atkinson
Wendy Balfour
Carol Barber
Guy Beaudin
Neil Betteridge
Katherine Bishop
Theresa Boyle*
Mary Lou Brock*
Graham Brunke*
Chris Bryne & Anda Whiting
Helena Bzonkova*
Margaret Anne Cain

Alberta G. Cefis
Claudia Colas
Wendy Cole
Gayle Corcoran
Catherine Cornell & Declan Lane*
Susan Coyne
David Craig
& Donna Piccinin-Craig
Joan Cranston*
Carol Dalgado
Lindsay Davidson
Shirley Dawe
Don DeBoer & Brent Vickar*
Steven D. Donohoe*
Laura Drake
Debbie Dumareshq
Wendy Evans & Chris Elson
John & Shari Ezyk
Beth Fanjoy
Steven Farber
Lee Ferrier
Bill & Rosemary Fillmore
Barbara Fingerote*
Neil Foster
David & Margaret Fox-Revett
Donald Fraser & Judythe Little
Linda Galen & William Draper
Ted Garrard
Kamala Jean Gopie
Doreen Gryfe*
Sarika Gundu
Eva Haggerty
Anne & William Harker*
Susan Helwig
Lawrence & Beatrice Herman*
Paul Hickey
Joe Hoja
Richard Horner*
Naomi & Sandy Horodezky*
Clive Houseman
Larry Hughsam
Kishwar Iqbal
Alison Janzen
Rayna Jolley
Barry & Cathy Joslin
Dagmar Kanzle
Soussanna Karas
Marcia & Paul Kavanagh*
Olanre Kayode
Robert Kee
Greg Kelner
Don & Francie Kendal*

SOULPEPPER SUPPORTERS

Sheryl Kennedy
Hans Kluge
Farah Kurji
Anita & Leon Lapidus
Dale Lawr*
Anne Layton
John Leavitt
Victoria Lee
Valentia Lee-Brotherton
Karen Leitner
Brad Lepp
Linda Lewis
Maureen Littlejohn
Oliver & Gillian Long*
Martha Loewen
Larry Lubin
Joanna Martin
John Martin & Sampa Bhadra
Linda Massey
Kelly McDonald
 & Greg Sigurdson*
Linda McGuire
Micheline McKay
 & Richard Comparey*
Mark McLean
Susan Moellers*
Dorothy Morari & James Mryglad*
Margaret & Gary Mousseau
Mary Jane Mossman
 & Brian Bucknall*
Steve Munro*
Paul Murphy*
Penny Noble
Brian O'Leary*
Jeremy Opolsky
Nancy Palk
Christine Pearce
Paul Pelletier
Stephen Phillips*
Diane Pitblado
Archie Platt
Harold Povilaitis*
Kerry Rittich
Sylvia Schmid
Catherine Seton
Phillip Silver
Glen Silvestri
Ryan Singh
Larry Smith*
Terry Smith
Patricia Stowe
Jill Strimas

Carol Strom
Carol Swindell
W. Michael Than*
Doug & Gail Todgham*
Cameron Turner
Karen Turner+
Stephen Uzielli
 & Robin Siegeman
Teresa Walsh
Gordon Waugh
John Wolf
Hersh Zeifman, In Memory of
 Nina Hope Wright
Marc Zwelling

Soulpepper extends our special gratitude to members of our Soul Mates program, who donate monthly to support our artistic & educational programming.

SOULPEPPER LEGACY CIRCLE

The following people have generously arranged bequests to Soulpepper:
Robin Cardozo
Roger Garland, C.M.
Ken Gingerich & Michael Oakes
Shira Hart
Anne Louise Layton
Claude Marchand
Jenny Tan
The Estate of
Wuchien Michael Than
7 anonymous friends of
Soulpepper

If you have any questions about your recognition or support, please contact us at 416-203-6264 x188 or development@soulpepper.ca

Individuals recognized for donations made between Jan 1 2024- Jan 1 2025

*Donors who have given to Soulpepper for 10+ consecutive years
+Soulpepper staff and Artist donors

Paolo Santalucia

Artistic Director

Gideon Arthurs

Executive Director

Administration & Artistic

Ece Aydin

Executive Support and Project Lead

Tessa Bouchier

Administrative Assistant

Luke Reece

Associate Artistic Director

Joanna Falck

Literary Associate

Frank Cox-O'Connell

Slaight Family Director of Music

Producing

Jonathan Heppner

Executive Producer

Robyn Hoja

Producer

Meghan Froebelius

Producer

Julia Carrano

Associate Producer

Production

Patricia Vinluan

Interim Senior Production Manager

Maya Royer

Production Manager

Leslie Hernandez

Technical Director

Nicholas Beardsley

Assistant Technical Director

Rhett Costin

Assistant Technical Director

Alex Edwards

Production Assistant

Andy DeVries

Head Carpenter

Lisa Nighswander

Head of Properties

Paul Boddum

Head Scenic Artist

Ellie Koffman

Head of Wardrobe

Development

Anne Rawn

Director of Development

Raveena Mahabir

Officer Philanthropy

Anastasia Gordon

Senior Officer, Foundations and Corporate Partnerships

Marketing

Lauren Naus

Interim Director of Audience Development

Michael Barker

Graphic Designer

Silvia Di Gregorio

Creative Content Designer

Social Impact

Rohan Kulkarni

Director of Social Impact

Jacqui Arntfield

Public Programming Lead

Maricris Rivera

Education & Community Programs Coordinator

Finance

Michelle Beveridge

Director of Finance

Maria Larina

Finance Manager

Nilsa Rivero

Accounts Payable Coordinator

Rachel Shen

Payroll Coordinator

Fang Tian

Accounting Coordinator

Soulpepper Founding Members

Martha Burns

Susan Coyne

Ted Dykstra

Michael Hanrahan

Stuart Hughes

Diana Leblanc

Diego Matamoros

Nancy Palk

Albert Schultz

Robyn Stevan

William Webster

Joseph Ziegler

Soulpepper

Board of Directors

Dana Lafarga (Chair)

Robin Cardozo

Beverley Flynn

Dave Friesema (Vice-Chair)

Roger Garland (Chair Emeritus)

Sonny Goldstein

Sarika Gundu

Veni Iozzo

Judith John

Melissa Kennedy

Karey Lunau

Anil Mohan

Sanjay Nakra (Vice-Chair)

Maja Neable

Erik Reed

Aaron Sanderson

Cindy Tripp

Alan Walker

Yasmin Warsame

Patron Services

Karen Turner

Director of Services & Operations

Matthew Costin

Patron Services Manager

Melanie Ferreira

Café Manager

Micah Bucholtz

Operation Services Coordinator

Kenzie Delo

Chloe MacPherson

Duty Managers

Adrian Chevalier

Shayna Linds

Peter Naccarato

Senior Patron Services
Representatives

Adrian Chevalier

Nicholas Eddie

Shayna Linds

Riley Kelk

Peter Naccarato

Pasanun Songsaeng

Yohannes Taye

Sarah Hotke

Wilfred Storey

Sabrina Gomes

Patron Services Representatives

Ryan Bagley

Sabrina Gomes

Henry Oswald Peirson

Sarah Hotke

Peter Naccarato

Floor Captains

Ryan Bagley

Colleen Didur

Shaneill Floyd-Wlazlak

Jeffrey Johnston

Riley Kelk

Diane Kingstone

Henry Oswald Peirson

Pasanun Songsaeng

Kale Dewitt

Sabrina Gomes

Jin Xu

Laura Dae

Nikki Battiston

Ushers

Jessica Wasserman

Senior Café Associate

Kirk Escriba

Enoch Franz

Dev Mallick

Abhijit Nair

Yohannes Taye

Yezhi Kuo

Baristas

I.T.

Fernando Arriola

I.T. Manager

Sheila Kearney Miller

Tessitura Administrator

Andrew Ho

I.T. Systems Administrator

Building Operations

Greg Poulin

Manager of Building Operation
& Production

Cole Vincent

Building Operator

Niamh Cunningham-Closs

Building Supervisor

Technicians

Gunes Agduk

Jason Shindle

Dalton Villeneuve-Marin

David Mallette

Young Centre Board of Directors

Robert Brouwer (Chair)

Eileen De Courcy

Lachlan MacQuarrie

Michael Herrera

Beverley Flynn

Leslie Hernandez

Alan Walker

Thank You!



Thanks to our wonderful legion
of Young Centre volunteers
for their continued support!

Young Centre Facilities Funding:



All front of house staff – floor captains, patron service representatives, baristas and ushers - working for the Young Centre for the Performing Arts are represented by Local B-173 of the International Alliance of Theatrical Stage Employees.

House and Stage Technicians employed by the Young Centre for the Performing Arts are represented by Local 58 of the International Alliance of Theatrical Stage Employees.



ART OPENS MINDS.

Proud to support the storytellers who open our minds,
inspiring us all to think bigger, together. **That's Enriched Thinking.®**

Scotia Wealth Management.®



Stay Connected and Up-to-date



SOULPEPPER.CA



@SOULPEPPERTHEATRE



FACEBOOK.COM/
SOULPEPPERTHEATRE



YOUTUBE.COM/
SOULPEPPERTHEATRE



@SOULPEPPERTHEATRE

The artists and staff of Soulpepper acknowledge the original caretakers and storytellers of this land—the Mississaugas of the Credit, the Haudenosaunee, the Anishinaabe, and the Wendat First Nations. In recognition of the caretakers of this land, Soulpepper has made a donation to Anishnawbe Health Foundation to support their services for Indigenous Peoples in Toronto. If you'd like to join us in supporting this organization, please scan the following QR code:

