

THE MUSICAL
STAGE CO.

Soulpepper

CROW'S
TAKING FLIGHT

TO LIVE



A STRANGE LOOP

BOOK, MUSIC
AND LYRICS BY

MICHAEL R. JACKSON

DIRECTED BY **RAY HOGG**

MUSIC DIRECTOR **CHRIS TSUJIUCHI** CHOREOGRAPHER **RODNEY DIVERLUS**

DIRECTOR'S NOTE

I am a fat, Black, gay theatre maker driven to create large-scale work that explores the rusty underpinnings of society and chips away at the veneer of politeness that overlays so much of contemporary life - I love a beautiful mess!

You're here today to experience the Canadian Premiere of *A Strange Loop*, a Pulitzer Prize-winning ode to disruptors, truth tellers, rebels, and innovators. Only ten musicals have won the Pulitzer in its 105-year history—and this one deserves its place. When I first saw it on Broadway, I asked myself: What makes a musical worthy of that prize? Within ten minutes, I had my answer. Michael R. Jackson reveals aching, hilarious, complicated truths about identity, self-worth, shame, and desire.

This play's deep dive into the beautiful mess of real life is nakedly honest and deeply personal for the writer, this director, our team of collaborators, and our extraordinary cast.

Each of us involved in its creation and interpretation has had to reckon with our personal reactions to the provocations this play presents. Here's what we've learned in the other side of our reckoning: "provocative" doesn't have to result in distanced alienation— for us it resulted in transformation!

Real talk: This show changed me. Not just as an artist, but as a human. It called me to live more fully in my skin, my body, and my art. That's what I hope this production does for you. We want you to feel this show. In your body. In your spirit. And, most importantly, we want you to see yourself in Usher and his quest too.

So settle in. Or better yet, don't. Let yourself be unsettled. That's where the transformation begins.

RAY HOGG

Director, *A STRANGE LOOP*

WHAT INSPIRED 4 TORONTO THEATRE COMPANIES TO UNITE ON THE CANADIAN PREMIERE OF A STRANGE LOOP?

"In October 2022, Ray (Hogg), Kate (Supleve) and I went to see A STRANGE LOOP on Broadway. We talked about it for three hours over late-night burgers and knew it needed to come to Toronto but didn't know how. We had different programming lined up, but couldn't let go of the dream. Exactly one year later, Kate and I were at a talk about the need to present daring, bold art. Afterwards, I looked at Kate and said 'We have to do A STRANGE LOOP' - I had been chasing the rights for a year at that point."

PAUL BEAUCHAMP

Co-Executive Director, The Musical Stage Company

"I was in rehearsals for COMET when Ray approached me. I had seen it on Broadway, and I remember sitting there in the theatre, stunned and overcome by what I witnessed. The show made such a big impact on me, and Ray's passion for its heart inspired me. I desperately wanted Crow's to be a part of bringing this show to Toronto — but I recognized that the opportunity was much bigger than Crow's alone could handle. It needed scale, vision, and partnership. My next phone call was to Weyni. We instantly began gushing about the show, and why it was so important."

CHRIS ABRAHAM

Artistic Director, Crow's Theatre

"Seeing the show on Broadway truly moved me; it felt like a liberating experience. When Chris reached out about the idea of collaborating to bring it to our city, it was an immediate yes for me and the team. We were excited to offer this show a home in our Baillie Theatre, and to be a part of a collective of companies bringing this beautiful show to life."

WEYNI MENGESHA

Artistic Director, Soulpepper

"In a rapidly changing world, the arts are essential in fostering connection, healing, and inspiration. The incredibly talented Toronto company of A STRANGE LOOP achieves all of these goals and more. Co-presenting A STRANGE LOOP was a natural fit. Great art, great partners, and a great purpose. When asked to join, we could only say a cheerful 'yes!'"

CLYDE WAGNER

President & CEO, TO Live

CONTENT WARNING

A Strange Loop deals with sensitive and mature themes and is recommended for audiences ages 16+. It includes a character's vivid perceptions of racism, homophobia, HIV stigmatisation, self-hatred, and depression. It also contains suggestive nudity and explicit language (inclusive of racial slang that may be offensive to some audience members).

**Running time:
120 mins, no intermission**

present

A STRANGE LOOP

BOOK, MUSIC AND LYRICS BY MICHAEL R. JACKSON

CAST

Malachi McCaskill
Usher

Nathanael Judah
Thought 5

Matt Nethersole
Thought 3, Understudy Thought 2

Charlie Clark
Usher Alternate, Understudy Thought 3

David Lopez
Swing

David Andrew Reid
Thought 4,
Dance & Intimacy Captain

Sierra Holder
Thought 1

Marcus Nance
Thought 6

Amaka Umeh
Thought 2, Understudy Thought 1

BAND

Chris Tsujiuchi
Piano-Conductor

Joseph Martel
Acoustic Guitar, Electric Guitar

Aubrey Dayle
Drums, SPD Pads

Mike Henley-Dunbar
Keys, Electric Guitar, Acoustic Guitar

Duncan Stan
Bass

Conrad Gluch
Flute, Clarinet, Bass Clarinet, Tenor Sax

CREATIVE TEAM

Michael R. Jackson
Bookwriter, Composer & Lyricist

Michelle Ramsay*
Lighting Designer

Lisa Karen Cox
Intimacy Director

Ray Hogg
Director

Brian Kenny*
Sound Designer

Peter Fernandes†
Associate Director

Rodney Diverlus
Choreographer

Za Hughes
Associate Lighting Designer

Jonah Nung
Assistant to the Music Director

Chris Tsujiuchi
Music Director

Sarah Miller
Stage Manager

Ludmylla Reis
Apprentice Director

Brian Dudkiewicz*
Set Designer

Farnoosh Talebpour
Assistant Stage Manager

Ming Wong*
Costume Designer

Evan Reid
Apprentice Stage Manager

PRODUCTION

Andy DeVries
Head Carpenter

Greg Chambers
1st Props Builder/Buyer

Güneş Agduk
Lighting Operator

Bill Stahl
1st Carpenter

Ellie Koffman
Head of Wardrobe

Everett Dalingwater
Audio Mixer

Paul Boddum
Head Scenic

Claudia Matas
Assistant Head of Wardrobe

Dalton Villeneuve Marini
Deck Hand

Hilda Chu, Morgan Evans, Annie Viggers
Scenic Painters

Erin Halls
Stitcher

Matthew Condotta
Deck Audio

Lisa Nighswander
Head of Props

Jacqueline Robertson-Cull
Head of Wigs

Irene Ly
Dresser



The musicians, musical director, conductor and orchestra contractor engaged for this production are members of the Toronto Musicians' Association, Local 149 of the American Federation of Musicians of the United States and Canada.

† The services of Peter Fernandes as associate director were made possible through the support of the Canadian Guild of Stage Directors and Choreographers' Assistant and Associate Program, funded by the Canada Council for the Arts.



Soulpepper Theatre is a member of the Professional Association of Canadian Theatres and engage professional artists who are members of Canadian Actors' Equity Association under the terms of the jointly negotiated Canadian Theatre Agreement.



*Indicated designers on this production are represented by the Associated Designers of Canada, Local ADC659.

MUSICAL NUMBERS

INTERMISSION SONG.....	Usher, Thoughts
TODAY.....	Usher, Thoughts
WE WANNA KNOW.....	Thoughts
INNER WHITE GIRL.....	Usher, Thoughts
DIDN'T WANT NOTHIN'.....	Thought 5, Thoughts
EXILE IN GAYVILLE.....	Usher, Thoughts
SECOND WAVE.....	Usher
TYLER PERRY WRITES REAL LIFE.....	Usher, Thought 3, Thoughts
WRITING A GOSPEL PLAY.....	Usher, Thoughts
A SYMPATHETIC EAR.....	Thought 1
INWOOD DADDY.....	Usher, Thought 6, Thoughts
BOUNDARIES.....	Usher
PERIODICALLY.....	Thought 4, Usher
DIDN'T WANT NOTHIN' REPRISE.....	Thought 5
PRECIOUS LITTLE DREAM/AIDS IS GOD'S PUNISHMENT.....	Usher, Thoughts
MEMORY SONG.....	Usher, Thoughts 2-6
A STRANGE LOOP.....	Usher, Thoughts

SPECIAL THANKS

Colin Rivers, Michael R. Jackson, Robert Ball, Obsidian Theatre, Nia Centre, Black Gay Men's Network, Uche Ama, Gérald Michaud, Noah Michaud, Simone Michaud, Patricia Cerra, Ace Martens, HomeLife/Realty One, Danny Grossman & Germaine Pierce, Don Jordan & Philip Cole, Dr Stephen Gray, Julia Walton, Made To Move Clinic, The Grand Theatre, Nancy Wilson, Black queer kin past, present, and future, Pascale Diverlus, Jaz Fairy J, Juan Pablo Muñoz, Cieran Liburd, Canadian Guild of Stage Directors and Choreographers' Assistant and Associate Program

Original Broadway Production produced by Barbara Whitman Playwrights Horizons, Inc. in association with Page 73 Productions, produced the World Premiere of "A Strange Loop" in New York City in 2019. Subsequently produced by Woolly Mammoth Theatre Company, Washington, DC.

A STRANGE LOOP is presented by special arrangement with Concord Theatricals. www.concordtheatricals.com

THE VIDEOTAPING OR MAKING OF ELECTRONIC OR OTHER AUDIO AND/OR VISUAL RECORDINGS OF THIS PRODUCTION AND DISTRIBUTING RECORDINGS OR STREAMS IN ANY MEDIUM, INCLUDING THE INTERNET, IS STRICTLY PROHIBITED, A VIOLATION OF THE AUTHOR(S)'S RIGHTS AND ACTIONABLE UNDER UNITED STATES COPYRIGHT LAW.

ACTING AND ARTISTIC BIOGRAPHIES



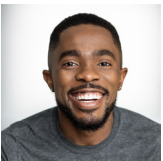
CHARLIE CLARK (he/him) is a performer hailing from Saint John, New Brunswick. He currently attends Sheridan College for Musical Theatre. FOR SOULPEPPER: Debut. OTHER THEATRE: Evil Dead The Musical (Starvox); Stranger Sings! (Mansfield Entertainment); Boy Boy and the Magic Drum (Under A Grove Productions). @charlie_clark777



LISA KAREN COX FOR SOULPEPPER: 1851: Spirit and Voice OTHER THEATRE: Post Democracy (Tarragon); Doubt, Intimate Apparel (Thousand Island Playhouse); Hamlet (Canadian Stage) FILM & TELEVISION: 21 Black Futures' Beyere (CBC Gem/Obsidian Theatre) OTHER: She has been nominated for two Dora Awards, and is faculty at Toronto Metropolitan University.



AUBREY DAYLE received his formal music education at McGill University and Manhattan School of Music in classical and jazz percussion and has performed in various musical styles and situations. He has toured with James "Blood" Ulmer; Hassan Hakmoun and Zahar (support act for Peter Gabriel); God Street Wine; the John Popper Band; Sam Rivers; Ernest Ranglin; and several other artists. While living in New York City, he continued to perform in diverse situations, including two years as the drummer for the Broadway show Bring in 'Da Noise Bring in Da Funk. As a member of the John Popper Band, he appeared on Late Night with David Letterman and The Tonight Show with Jay Leno. Aubrey continues to work with James "Blood" Ulmer, and Juno nominated artist Shakura S'Aida. His latest project is called 13go, with bassist Ian DeSouza, Kim Ratcliffe, and produced by Living Colour's Vernon Reid.



RODNEY DIVERLUS (they/them) is a multidisciplinary movement artist. FOR SOULPEPPER: The Guide to Being Fabulous (2023). SELECT THEATRE/DANCE: Nightmare Dream (IFT/Obsidian); Blackout (Tableau D'Hôte); Hadrian (Canadian Opera Company); Floreus (L'Organisme; Dérives (Bentway); Exit Strategies (Museum of Contemporary Art); Juliet & Romeo (Decidedly Jazz). CHOREOGRAPHY: you,me,freedom (Atlantic Ballet); welcome, we've been waiting (Toronto Dance Theatre); RUR Torrent of Light (Tapestry Opera); you, meet us (Toronto Metropolitan University), in your eyes, the sparkle of gunpowder (Art Gallery of Ontario); sagittarius, meet capricorn (Canadian Contemporary Dance Theatre). @rodneydiverlus



BRIAN DUDKIEWICZ (he/him) was born in Montreal, but currently resides in Toronto FOR SOULPEPPER: Debut. OTHER THEATRE: Dixon Road (The Musical Stage Company), Jukebox Hero (Mirvish); Priscilla, Kinky Boots, The Sound of Music, Newsies, Rocky (Drayton); King James, Never Not Once (Theatre Aquarius); Controlled Damage, Titanic (The Grand), Frozen, Billy Elliot, The Last Five Years (Neptune), Lady Day at Emerson's Bar and Grill (Theatre Calgary); April Fools, Prayer for the French Republic, Indecent, Million Dollar Quartet, Bad Jews (Segal Center). Many shows Off-Broadway in NYC. OTHER: Brian holds an MFA in Set Design from the Yale and a BSc in Architecture from McGill. @briandud1



PETER FERNANDES Creative: Assistant Director; Wights (Crow's) Sherlock Holmes and the Mystery of the Human Heart, Witness for the Prosecution (Shaw) Magic/Illusions; Trident Moon (Crow's) Snow in Midsummer (Shaw) Bremen Town (Next Stage) Assistant Illusions Design - Fat Ham (Broadway) Performer: Fat Ham (Canadian Stage), One Man Two Guvnors, Importance of Being Earnest, Damn Yankees, Charley's Aunt, Christmas Carol, Russian Play, Brigadoon (Shaw); Bidding War, Master Plan, Fifteen Dogs (Crow's); Almost a Full Moon, Peter and the Starcatcher

(Citadel); Rose, Father Comes Home From the Wars, Alligator Pie, Incident at Vichy, The Just, Marat/Sade, The Dybbuk, Spoon River, Tartuffe, The Crucible, Idiot's Delight (Soulpepper); Vietgone (RMTC); Romeo & Juliet, Midsummer Night's Dream, Love & Information, Twelfth Night, King Lear (Canadian Stage); Jerusalem (OtM/Company Theatre); You're a Good Man, Charlie Brown! (MTYP); Onegin (NAC/Musical Stage); Passing Strange (Musical Stage/Obsidian); FILM/TV: God of Frogs, 21 Black Futures, Pretty Hard Cases, Odd Squad. AWARDS: Dora Award recipient, Philip Akin Black Shoulders Legacy Award.



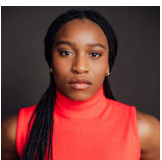
CONRAD GLUCH (he/him) is a Toronto based multi-instrumentalist known for playing just about every woodwind under the sun. Saxophones, Clarinets, Flutes, and more - with the occasional detour into the world of low brass. He's performed across Canada and the U.S. at festivals, clubs, and in theatre pits, with credits ranging from Mirvish productions to high energy Balkan brass bands. Off stage, he can be found hauling an unreasonable number of instruments to his next gig by bike.



MIKE HENLEY-DUNBAR is a Toronto-based Songwriter, Producer, Music Director and Session Multi-Instrumentalist. He has had the privilege of helping to create award-winning music compositions and sound design with SNDWRx Audio by Design, and has performed across Canada with artists such as Sandra Bouza and Big Smoke Brass. As a Music Director, he has had the privilege of helping to develop several original musicals across the Greater Toronto Area, including Statistics the Musical (Ladyville Productions) and Constellation Prize (Spare Drawer Productions). Much love to my wife, Shannon, for continuing to support my passion and encouraging me to never stop growing. He is thrilled to be making his debut with The Musical Stage Company, Soulpepper, Crow's Theatre and TO Live! @michaelhenleydunbar



RAY HOGG is an award-winning Black theatre artist known for creating and presenting virtuosic, visually stunning, viscerally moving theatre and live performance. He has over 25 years of artistic, educational and leadership experience in the most celebrated opera, dance, and theatre companies around the world. His work as a theatre artist, director, and choreographer has taken him across Europe, The United States, and Canada. He has created for stages as diverse as Neptune Theatre in the east, The Arts Club Theatre Company in the west, and many others in between. From 2012-2017 Ray served as Artistic Director of Rainbow Stage., more recently as Artistic Director for The Musical Stage Company, and is currently an Associate Artist at Halifax's Neptune Theatre and the founder of Prime Mover Theatre Company. Directing credits include: Controlled Damage (The Grand Theatre London), Lady Day At Emerson's Bar & Grill (Theatre Calgary), Dixon Road, Starwalker, Soft Magical Tofu Boys (The Musical Stage Company), Da Kink In My Hair (Arts Club Theatre Co); Cats, The Producers, Sister Act, Shrek, Little Shop of Horrors (Rainbow Stage); Billy Elliot, Five Guys Named Moe, Dreamgirls (Neptune Theatre), Love and Information, An Enemy of the People, Mary Poppins, Damn Yankees and Chicago (Sheridan College). His award-winning choreography has been seen at Crow's Theatre (Natasha, Pierre & The Great Comet of 1812), the Shaw Festival, the Winnipeg Symphony Orchestra, Neptune Theatre, the Segal Centre Montreal, and more. Social Media: Twitter & FB: @rayhogg • IG: @rayhogg2021



SIERRA HOLDER (she/her) was born and raised in Ottawa, is lucky to now call Toronto home. FOR SOULPEPPER: Debut. Other Theatre: Beaches (Theatre Calgary), The Wizard of OZ (Canadian Stage) Peter's Final Flight , The Wizard of Oz (Ross Petty Productions) The Adventures of Pinocchio (Young People's Theatre) A Belly Full, Freaky Friday (Theatre Aquarius) Film&Television: Gen V, The Maddness, Accused, Bring It On : Cheer or Die (Jackie), Locke & Key, The J Team, Y: The Last Man. Other: I am deeply honoured to be a part of telling this story in this particular moment in the world. To

everyone who resonates with this message I love you, I love you. @sierr_uh



ZA HUGHES (they/them) was born and raised in the GTA. FOR SOULPEPPER: Debut. OTHER THEATRE: The Noose (Next Stage Festival), A Wrinkle in Time (StoryBook Theatre), Doctor Faustus (Edinburgh Fringe), Cabaret (St. Lawrence College), Peter and the Star Catcher (StoryBook Theatre), A Scandal for All Seasons (Theatre by the Bay), Antigones (University of Victoria MFA Pro Forma). Assistant Lighting Designer: Prison Dancer (Citadel Theatre), As You Like It (Theatre Calgary), Little Shop of Horrors (Capitol Theatre), Made in Italy (Theatre Calgary) and Martyr (ARC). @za_hues



NATHANAEL JUDAH (he/him) was born in Kingston Jamaica but raised most of his life in Canada. FOR SOULPEPPER: Debut OTHER THEATRE: Gem of the Ocean, Just to get Married, The Doctors Dilemma, Gypsy, Antigonic, The Amen Corner (Shaw Festival) FILM AND TELEVISION: Kim's Convenience (CBC Spin (Disney) The Parker Anderson's (BYU) Take Note (Family/Peacock). @nathanaeljudah



BRIAN KENNY (he/him) is a designer for theatre from Newfoundland and Labrador and is a graduate from The National Theatre School of Canada and Sheridan College. FOR SOULPEPPER: Debut. OTHER THEATRE: La Cage Aux Folles (Stratford Festival), Fall On Your Knees (Vita Brevis/Canadian Stage), Kelly V. Kelly (The Musical Stage Company), Charlie and The Chocolate Factory (YPT), Everybody Just C@lm The F#ck Down, Between Breaths (Artistic Fraud). UPCOMING: After The Rain (Tarragon/The Musical Stage Company). OTHER: Brian is a board member of the IATSE Local 659, The Associated Designers of Canada. @briankennydesign



DAVID LOPEZ (he/him) FOR SOULPEPPER: Debut. OTHER THEATRE: Charlie and the Chocolate Factory (YPT), Seussical (YPT, Citadel), The Wild Party, Passing Strange (The Musical Stage Company), The Rocky Horror Show (CanStage, RMTC, STC), High Society (Shaw Festival), The Little Mermaid (Globe Theatre), Ain't Misbehavin' (CanStage, Dora Award Nomination), La Cage aux Folles (Neptune Theatre, Merritt Award Nomination), Kinky Boots (Mirvish Productions) Film &Television: Once Upon A Mattress, At The Hotel, Stormy Weather, A Handmaid's Tale, Workin' Moms Other: Backup dancer for Patti LaBelle and Katy Perry. Love to Mom, Dad, and James.



JOSEPH MARTEL is a JUNO-nominated freelance guitarist, award winning composer for film and video games, audio engineer, and producer. He is known for fostering levity while remaining dedicated to connecting and beautiful music. His projects range from americana and trad, to post-hardcore and experimental ambient. He is experienced and deeply interested in sound and its emotional impact and brings this focus to each performance - creating a space for audiences and performers alike to feel and release emotion.



MALACHI MCCASKILL (he/him) is excited to be making his Soulpepper/The Musical Stage Company/Crow's/TO Live debut in A Strange Loop! This North Carolina, U.S. native is ready to bring this world renowned story to Canada, and to share his art for all of Toronto! Credits include; A Strange Loop (Ahmanson Theatre CTG) Elf The Musical (NC Theatre) Beautiful: The Carole King Musical (NC Theatre). @malachimccaskill



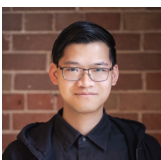
SARAH MILLER (she/her) was born and raised in St. Catharines, ON. FOR SOULPEPPER: *Sizwe Banzi is Dead*, *Innocence Lost*, *Of Human Bondage*, *Spoon River*, *A Christmas Carol*, *Hosanna*, *The Heidi Chronicles*, *Angels in America*. OTHER THEATRE: *I Send You This Cadmium Red* (Art of Time); *1939, Fall on Your Knees* (Canadian Stage); *A Year with Frog & Toad*, *Little Shop of Horrors* (Capitol Theatre); *Natasha, Pierre & The Great Comet of 1812* (Crow's Theatre/The Musical Stage Company); *The Runner* (Human Cargo/RMTC); *Harry Potter and the Cursed Child* (Mirvish); *Yaga* (Tarragon Theatre). @sarahshootingstars



MARCUS NANCE (he/him) was born and raised in Monterey, California. FOR SOULPEPPER 2025: Debut. OTHER THEATRE: *The Little Prince* (Pacific Opera, Victoria); *Natasha, Pierre & The Great Comet of 1812* (Crow's/The Musical Stage Company); *Cymbeline*, *Frankenstein Revived*, *HMS Pinafore*, *Jesus Christ Superstar*, *Moby Dick*, *My One and Only* (Stratford); *HMS Pinafore* (Vancouver Opera); *La Bohème*, *Jesus Christ Superstar* (Broadway); *Sweeney Todd*, *Floyd Collins*, (Shaw Festival); *Wizard of Oz*, *Beauty and the Beast* (Grand Theatre); *Evangeline* (Charlottetown); *Kismet*, *Of Thee I Sing* (Encores! N.Y.C.); *Jesus Christ Superstar* (La Jolla); *Porgy and Bess* (Toronto Symphony). FILM AND TELEVISION: *Queen Tut*, *Good Sam*, *Murdoch Mysteries*, *Departure*, *Mayday*, *Prodigal Son*, *The Producers*. @nance.marcus



MATT NETHERSOLE (they/them) FOR SOULPEPPER: Debut. FOR CROW'S THEATRE: *Chew* (workshop). FOR THE MUSICAL STAGE COMPANY: *Starwalker* (workshop). Other Theatre: *Sweet Charity*, *Pygmalion*, *The Trials of Brother Jero*, *The Magician's Nephew*, *Grand Hotel*, *The Horse and His Boy*, *Brigadoon* (Shaw Festival). *A Chorus Line*, *The Hypochondriac* (Stratford Festival). *Acha Bacha* (Theatre Passe Muraille), *Bend it Like Beckham* (Starvox), *James and the Giant Peach* (YPT), *The Wizard of Oz* (Ross Petty Panto). Film & Television: *That TVO Kids Show*, *Know Brainers* (TVO) *Schmigadoon* (Apple TV), *The Mobbles* (CBC). Other: Matt is also Host/Vocalist for *Queer Songbook Orchestra* and Host/Producer/Co-creator of the TVO Podcast *Queries* available now on Spotify and Apple Podcasts.



JONAH NUNG Jonah is a Toronto-based pianist and music director who is passionate about musical theatre's ability to foster community and amplify marginalized voices. Recent credits include *Wild Child* (Associate MD, Theatre Sheridan), *Into the Woods* (Music Intern, RCM), *The Last Piece* (MD, Hart House Theatre), and *A Perfect Bowl of Pho* (MD, Kick & Push Festival). As a pit musician, he has played in the orchestras of *The Lion King* (Mirvish), *My Fair Lady* (Shaw), and *Chris, Mrs.* (Boldly Productions). He has also accompanied numerous concerts and cabarets, with previous collaborators including Britta Johnson and Measha Brueggergosman-Lee.



MICHAEL R. JACKSON's *A Strange Loop* won the 2022 Tony Award for Best Musical and Best Book of a Musical. It was also the recipient of the 2020 Pulitzer Prize for Drama. He is also the author of *White Girl in Danger*, produced by the Vineyard Theatre in co-production with Second Stage Theater, and the co-author of *Teeth*, produced by Playwrights Horizons. Michael is the recipient of an Obie Award, Drama Desk Award, Jonathan Larson Grant, Lincoln Center Emerging Artist Award, ASCAP Foundation Harold Adamson Award, Whiting Award, and Helen Merrill Award for Playwriting. Jackson holds a BFA and MFA in playwriting and Musical Theatre Writing from the NYU Tisch School of the Arts.



MICHELLE RAMSAY (she/her) was born and raised in Prince George, B.C. FOR SOULPEPPER: Lighting Designer for *The Guide to Being Fabulous*; *The Royale*; for coloured girls... OTHER THEATRE: *Snow in Midsummer* (Shaw Festival); *Come Home: The Legend of Daddy Hall* (Tarragon Theatre); *Million Dollar Quartet* (Grand Theatre); *Women of the Fur Trade* (Stratford Festival); *Prison Dancer* (Citadel Theatre); A

ACTING AND ARTISTIC BIOGRAPHIES

Midsummer Night's Dream (Theatre Rusticle) OTHER: Michelle is a recipient of eight Dora Awards, the Pauline McGibbon Award, and was a finalist for the 2021 Siminovitch Prize.



DAVID ANDREW REID (he/him) Jamaican (Xaymacan) by birth, Canadian (Kanatan) by choice. David is an actor, singer, dancer, choreographer, and educator in theatre. FOR SOULPEPPER : Debut. OTHER THEATRE (selected): Bitelle in La Cage aux Folles, Wendy & Peter Pan (Stratford); Charlie in Brigadoon (Shaw/5th season); LCpl Harold Dawson in A Few Good Men (Drayton Entertainment); Jamal in Escape to Margaritaville (Theatre Calgary); Beadle in Sweeney Todd (Talk Is Free Theatre); David Heard in Choir Boy (Canadian Stage); The Color Purple (Neptune Theatre) TELEVISION: Milo Strange in Murdoch Mysteries (CBC) @davidandrewreid



EVAN REID (he/they) Evan Reid was born and raised in Toronto, ON. FOR SOULPEPPER: Debut. OTHER THEATRE: UnCovered: U2 & The Rolling Stones (The Musical Stage Company); Boy Boy and The Magic Drum (Toronto Fringe Festival); Mary Poppins, Sweeney Todd, Jesus Christ Superstar, In Studio: The Words and Music of Britta Johnson, Happy End (Theatre Sheridan); The Calling (Random Noise Theatre). OTHER: Evan is a graduate of Sheridan College's Technical Production program. @evankreid



LUDMYLLA REIS (they/them) is a cultural leader, a theatre director, a filmmaker, and a curator with a BFA in acting and an MFA in directing as well as an independent career in project management and cultural studies. They are currently the Festival Director for The Rhubarb Festival @ Buddies in Bad Times. In Leadership, they have completed their Metcalf Foundation Internship with GCTC, NAC, and Black Theatre Workshop, and the Co-Artistic Producer at TACTICS. In Theatre, they are a Director, a Stratford's Langham Workshop Alumni, a Director's Lab North alumni, a Cultural Dramaturg, a Deviser, and a Professor, having taught at uOttawa's BFA for Acting and Scene Study classes. Twice nominated for the Pauline McGibbons award as an Emerging Director, they have received Awards from Ottawa Fringe for New Works and Prix Rideau for Best Directing.



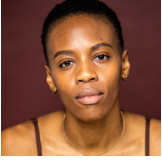
DUNCAN STAN is a freelance bassist from Toronto Ontario. Musical theater performance credits include: Million Dollar Quartet (Capitol Theater Port Hope), Turn The Page: Three Musical Shorts (Theatre Sheridan), Full House! The Musical (Starvox), Hedwig and the Angry Inch (Talk Is Free Theatre), The Rocky Horror (Hart House Theatre) and 9 to 5 (Randolph Theatre) to name a few. He is also a member of the band Vilivant with which he can be seen touring all over the country. Duncan is excited and honored to be a part of this important and moving story. @duncan.stan17



FARHNOOSH TALEBPOUR (she/her) was born in Tehran, Iran but has now spent most of her life in Toronto, ON. FOR SOULPEPPER: English (2023), Queen Goneril, King Lear (2022) OTHER THEATER: Bittergirl the Musical (TIP), Red Velvet (Crow's theatre), Dido & Aeneas (Opera Atelier), Dixon Road (The Musical Stage Company/Obsidian Theatre Company). SM: Dear Robert (Video Cabaret), Let Me Explain (Green Light Arts), Songs from The Journey (Daniels Corporation/RCM), seven methods of killing kylie jenner (OTC), Lessons in Temperament (Outside the March), No Save Points (OtM). FILM: Assistant Production Design for One Small Visit, Lune. Costume design for Tête à Tête, Queen of the Morning Calm. OTHER: She would like to thank all the people around her who have helped keep her feet grounded, joined in laughter, and kept her heart safe. @Farnoosh



CHRIS TSUJIUCHI (any pronouns) was born and raised in Toronto, ON. FOR SOULPEPPER: Debut. OTHER THEATRE: Onegin (The Musical Stage Company/National Arts Centre); Into the Woods (Talk is Free/Winter Garden Theatre); Escape to Margaritaville (Theatre Calgary) OTHER: Chris has toured extensively with Sharron Matthews, and can also be seen performing in Asian Riffing Trio (aka ART) and his own "Chris-terical" series of cabarets. @ChrisTsujiuchi



AMAKA UMEH (they/them) was born and raised in Lagos, Nigeria and Calgary, AB. FOR SOULPEPPER: Three Sisters (2024); Sizwe Banzi is Dead (2023); Dialect Coach for 'da Kink in my Hair (2022); 1851: Spirit and Voice, Her Words Festival, Around The World in 80 Plays (2021). OTHER THEATRE: Fall On Your Knees (Eastern Canadian tour); Death and the King's Horseman, Hamlet, (Stratford Festival); The Wolves (Howland Company/Crow's Theatre). FILM: The Stranger's Case (CBC Gem). OTHER: Audiobook: Butter Honey Pig Bread by Francesca Ekwuyasi (ECW Press). @yesamaka



MING WONG (she/her) is an award-winning Toronto costume designer working in theatre, dance, opera, and film & television for over 15 years. She is a graduate from the Ontario College of Art & Design. FOR SOULPEPPER: Kim's Convenience, The Master Plan, Three Sisters, De Profundiis, Sizwe Banzi is Dead, Pipeline Other Theatre: Wights, Rosmersholm, The Wrong Bashir, Natasha, Pierre, & The Great Comet of 1812, The Master Plan, Red Velvet, Uncle Vanya, The Wedding Party, (Crow's); Charlie & The Chocolate Factory, (YPT); Salesman in China, Rent, Hamlet 911, Stratford Festival; Once, TIP, Things I Know to be True, (Company Theatre/Mirvish); Peter's Final Flight, Ross Petty Productions; The Wizard of Oz Panto, The Inheritance, Public Enemy, (Canadian Stage); Is God Is, (Canadian Stage/Obsidian/Necessary Angel); Candida, Just to Get Married, Trouble in Mind, (Shaw Festival); Hansel und Gretel, Canadian Opera Company; The Color Purple, (Citadel Theatre/RMTC). Upcoming: Trident Moon, Flex (Crow's); Wait Until Dark (Shaw). Other: 2021 Virginia & Myrtle Cooper Award recipient, 2 time Dora Award Winner.
www.mingwongdesign.com @mingwongdesign

Great theatre lives here.



A Strange Loop
Photo of Malachi McCaskill by Alessandra Mello.

BMO



We're proud supporters of **Crow's Theatre**, **Soulpepper Theatre** and **The Musical Stage Company**, and the artists who captivate audiences with exciting, innovative, and entertaining productions.

We're pleased to sponsor **A Strange Loop**.

A note from BMO

Crow's Theatre's Lead
Season Sponsor

It is with great excitement that we extend our warmest welcome to all audiences for this spectacular production of *A Strange Loop*. As the Lead Season Sponsor, BMO is thrilled to play a role in supporting the artistic brilliance and creative innovation that define Crow's Theatre.

We believe in the transformative power of the arts to shape conversations, challenge perspectives, and bring communities together. Behind every curtain call and standing ovation lies the dedication of arts workers, supporters, patrons, volunteers, front of house staff, and of course, creators, whose love for the arts have built Crow's Theatre into a vibrant cultural arts hub in Toronto's east end.

BMO is proud to support Crow's Theatre, along with our partners Soulpepper Theatre Company and the Musical Stage Company. We celebrate the collaboration among these organizations and TO Live that has brought *A Strange Loop* to the stage, exemplifying the kind of bold, collective storytelling that enriches Toronto's cultural landscape.

We extend our deepest appreciation to the talented artists that keep us coming back for more. To the audience, thank you for joining us on this remarkable journey.

BMO



THE MUSICAL STAGE CO.

is the largest and leading charitable musical theatre company in Canada. Established in 2004 as Acting Up Stage Company, we drive the evolution of musical theatre.

Where music and storytelling collide.

We are inspired by music's unique ability to viscerally affect people and are committed to cultivating experiences – onstage and off – that transform lives, build empathy and create community through musical theatre.

We incubate new Canadian musicals from development to production, investing in Canadian musical theatre writers and building national and international partnerships. Our musical productions – including award-winning contemporary musicals, world premieres and concerts

– are seen live by 30,000 people over the 80+ nights that we are onstage annually in venues both traditional and surprising.

To date, our work has been recognized with 135 Dora Award nominations, 28 Dora Awards and 23 Toronto Theatre Critics' Awards. Our robust education programs develop the artists and audiences of tomorrow, offering musical theatre training that boosts self-confidence and self-expression for over

200 young people each year without cost to the participants. We also curate innovative musical programs in partnership with diverse organizations, maximizing the resonance of our work across disciplines and communities.

UP NEXT: The Musical Stage Company along with Tarragon Theatre presents the world premiere of Canadian musical AFTER THE RAIN by Rose Napoli and Suzy Wilde. For more information, visit www.musicalstagecompany.com.

Executive

Paul Beauchamp (he/him)

Co-Executive Director

Kate Supleve (she/her)

Co-Executive Director

Artistic & Production

Robert McQueen (/)

Director of New Musical Development

Emma Westray (she/her)

Associate Producer

Kate Chubbs (she/her)

Administrative & Production Coordinator

Jenny Cheng (she/her)

Accountant

Development

Chase Hiebert (he/him)

Sponsorship & Audience Development Associate

Colette Richardson (she/her)

Development Associate

Marketing

Michelle Knight (she/her)

Director of Marketing & Communications

Natasha Ramondino (she/her)

Marketing Associate

Associates

David Daniels

Consulting Producer

Kevin Wong (he/him)

Artistic Associate

Mitchell Marcus (he/him)

Founder

Board of Directors

Megan Deeks

Chair

Matt Webster

Vice-Chair

Alyse Bernbaum

Board Secretary

Anita Ferrari

Board Treasurer

Susan Garvie

Board Director

David Kaplan

Board Director

Paul Orlander

Board Director

Josh Petersel

Board Director

Tisha Rattos

Board Director

Sarah Robertson

Board Director

Tania Senewiratne

Board Director

Weyni Mengesha

Artistic Director

Gideon Arthurs

Executive Director

Administration & Artistic

Ece Aydin

Executive Support and Project Lead

Luke Reece

Associate Artistic Director

Joanna Falck

Literary Associate

Frank Cox-O'Connell

Slight Family Director of Music

Nadia Kwiatkowski

Artistic Coordinator

Producing

Jonathan Heppner

Executive Producer

Robyn Hoja

Producer

Julia Carrano

Associate Producer

Production

Jasmine Knox

Senior Production Manager

Patricia Vinluan

Production Manager

Leslie Hernandez

Technical Director

Nicholas Beardsley

Assistant Technical Director

Rhett Costin

Assistant Technical Director

Andy DeVries

Head Carpenter

Lisa Nighswander

Head of Properties

Paul Boddum

Head Scenic Artist

Ellie Koffman

Head of Wardrobe

Claudia Matas

Assistant Head of Wardrobe.

Development

Anne Rawn

Director of Development

Raveena Mahabir

Officer Philanthropy

Anastasia Gordon

Senior Officer, Foundations and Corporate Partnerships

Marketing

Lauren Naus

Senior Manager of Marketing and Sales

Riaz Charania

Director of Marketing and Communications

Duaa Zahra

Digital Engagement Coordinator

Education & Community

Rohan Kulkarni

Director of Social Impact

Jacqui Arntfield

Public Programming Lead

Maricris Rivera

Education & Community Programs Coordinator

Finance

Michelle Beveridge

Director of Finance

Maria Larina

Finance Manager

Shishi Chen

Payroll Coordinator

Nilsa Rivero

Accounting Coordinator

Rachel Shen

Accounts Payable Coordinator

Fang Tian

Accounting Coordinator

Soulpepper Founding Members

Martha Burns

Susan Coyne

Ted Dykstra

Michael Hanrahan

Stuart Hughes

Diana Leblanc

Diego Matamoros

Nancy Skaltz

Albert Schultz

Robyn Stevan

William Webster

Joseph Ziegler

Soulpepper

Board of Directors

Robin Cardozo (Chair)

Nicholas Chambers (Vice Chair)

Maureen Dodig

Beverley Flynn

Julia Foster

Dave Friesema

Roger Garland

Sarika Gundu

Veni Iozzo

Judith John

Melissa Kennedy

Dana Lafarga (Vice-Chair)

Karey Lunau

Anil Mohan

Sanjay Nakra

Maja Neable

James O'Sullivan

Alicia Rose

Aaron Sanderson

Martha Tory

Cindy Tripp

Alan Walker

Yasmin Warsame

Patron Services

Karen Turner

Director of Services & Operations

Matthew Costin

Patron Services Manager

Melanie Ferreira

Café Manager

Micah Bucholtz

Operation Services Coordinator

Kenzie Delo

Chloe MacPherson

Duty Managers

Adrian Chevalier

Shayna Linds

Senior Patron Services
Representatives

Max Ackerman

Adrian Chevalier

Tushar Dalvi

Nicholas Eddie

Shayna Linds

Riley Kelk

Peter Naccarato

Pasanun Songsaeng

Yohannes Taye

Sarah Hotke

Wilfred Storey

Sabrina Gomes

Patron Services Representatives

Max Ackerman

Sarah Hotke

Peter Naccarato

Henry Oswald Peirson

Floor Captains

Max Ackerman

Ryan Bagley

Colleen Didur

Shaneill Floyd-Wlzlak

Jeffrey Johnston

Riley Kelk

Diane Kingstone

Henry Oswald Peirson

Jishan Saha

Pasanun Songsaeng

Justine Christensen

Kale Dewitt

Sabrina Gomes

Jin Xu

Laura Dae

Nikki Battiston

Ushers

Jessica Wasserman

Senior Café Associate

Kirk Escriba

Enoch Franz

Dev Mallick

Abhijit Nair

Yohannes Taye

Yezhi Kuo

Jishan Saha

Setareh Soleimaninasab

Baristas

I.T.

Fernando Arriola

I.T. Manager

Sheila Kearney Miller

Tessitura Administrator

Andrew Ho

I.T. Systems Administrator

Building Operations

Greg Poulin

Manager of Building Operation
& Production

Cole Vincent

Building Operator

Niamh Cunningham-Closs

Building Supervisor

Technicians

Gunes Agduk

Andres Castillo-Smith

Dalton Villeneuve-Marini

Young Centre Board of Directors

Robert Brouwer (Chair)

Eileen De Courcy

Lachlan MacQuarrie

Michael Herrera

Beverley Flynn

Leslie Hernandez

Alan Walker

Thank You!

Young Centre

Thanks to our wonderful legion
of Young Centre volunteers
for their continued support!

Young Centre Facilities Funding:



All front of house staff – floor captains, patron service representatives, baristas and ushers - working for the Young Centre for the Performing Arts are represented by Local B-173 of the International Alliance of Theatrical Stage Employees.

House and Stage Technicians employed by the Young Centre for the Performing Arts are represented by Local 58 of the International Alliance of Theatrical Stage Employees.

CROW'S ADMINISTRATION

Artistic Director

Chris Abraham

Executive Director

Sherrie Johnson

Associate Artistic Director

Paolo Santalucia

Artistic Associate / Assistant
to the Artistic Director

Christopher Manousos

Metcalf Foundation

Artistic Direction Intern

Peter Fernandes

General Manager

Katie Pounder

Senior Producer

Heather Landon

Producer

Beth Wong

Associate Producer

Cyrus Shewell

Director of Production
and Facilities

LJ Savage

Production Manager

Jeremy Hutton

Technical Director

Ryan Borshuk

Assistant Technical Director

Amber Rea

House Technicians

Jay Hines

Kim Schaedlich

Zach White

Interim Director of Marketing
and Communications

Ryan Hildebrandt

Graphic Designer

Jacob Whibley

Marketing Associate

Hallie Seline

Media Relations

Suzanne Cheriton, Red Eye Media

Director of Philanthropy

Laura Langlois

Philanthropy Services Associate

Kasia Swintak

Finance Manager

Walter Ho

Accountant

Claudia Padilha

Manager of Ticketing
& Venue Services

Jordaan Mason

Manager of Sales
& Front of House

Peter Kelly

Box Office and Front
of House Supervisors

Rebecca Bauer

Natalie Scagnetto

Box Office and Front of House Swing
Supervisors

Bonnie Duff

Gabriella (Gabbi) Kosmidis

Box Office / FOH Representatives

Samantha Barker

Nikki Clements

Tushar Dalvi

Tianna Dang

Bonnie Duff

Lara Hamburg

Elyssa Hsu

Anthony Jhade

Yoojin Kim

Gabriella (Gabbi) Kosmidis

Gloria Mampuya

Shelby Mwambu

Nia Osei

Becky Plotnek

Theodore Zachariah

Bar Manager

Ted Hallett

Bartenders

Tushar Dalvi

Siobhan Gallagher

Gloria Mampuya

Navtej Sandhu

BOARD OF DIRECTORS

Prakash Amarasooriya

Josef Bornbaum

John Brodhead

Gordon Currie

Gabe Gonda

Heather Jessiman

Anne Maggisano

Gurbani Marwah

R.B. (Biff) Matthews

Seaton McLean

Max Meighen

Jonathan Nehmetallah

Margaret Nelligan, Board Chair

Michael Paris

Wendy Pitblado

Greg Reed, Treasurer

Nancy Tremblay, Secretary

Nancy Lockhart, Chair Emerita

TO LIVE ADMINISTRATION

TO Live Board of Directors

Lori DeGraw Chair
Councillor Lily Cheng Vice Chair
Councillor Paula Fletcher
Councillor Chris Moise
Brian Astl
Robyn Citizen
Myriam Gafarou
Mustafa Humayun
Terri Jaffe
Gave Lindo
Wasifa Noshin
Sun Young Yoon

Executive Management

Clyde Wagner
President & CEO

Isabel Vincente Menanno
Director of the Office of the CEO &
Board Relations

St Lawrence Centre Redevelopment

Leslie Lester
Vice President of STLC
Redevelopment

Development

Sandra Bellisario
Vice President of Philanthropy &
Sponsorship

Madeleine Skoggard
Director of Philanthropy &
Sponsorship

Nikita Patel
Senior Manager, Corporate
Partnerships & Sponsorships

Halyna Polischuk
Senior Manager, Leadership Giving

Sahar Alamgir
Assistant Manager, Philanthropy &
Sponsorship

Finance & Administration

William Milne
Vice President of Finance &
Administration

Hayde Boccia
Director of Finance

Michael Johnson
Controller

Sabrina Li
Senior Finance Manager

Paul Gagnon
Client Settlement Services Manager

Dorian Barton
Client Settlement Services Manager

Gladys Torres
Payroll Manager

Nelum Dissanayake
Payroll Specialist

Fiona Liu
Accounting Assistant, Treasury
Analyst

Fiona Wan
Accounting Assistant, Financial
Analyst

Nooshin Ashraf-Zadeh
Accounting Assistant

Ramsha Zulfiqar
Accounting Assistant, Settlements
Coordinator

Charles Mayne
Office Clerk

Information Technology

David McCracken
Director of Information Technology

Ali Irannezhadi
Network & Systems Administrator

Michael Cadiz
IT Support Technician

Scott Spence
IT Coordinator

Human Resources & Organizational Culture

Michelle Carter
Vice President of Human Resources
& Organizational Culture

Mohamed Othman
Director of Human Resources

Dawn T. Maracle
Director of Indigenous Affairs &
Engagement

Melissa Creighton
HR Generalist

Marketing & Communications

Jeff Rohrer
Vice President of Marketing &
Communications

Stephanie Canarte
Director of Marketing

Grant Ramsay
Media Relations Officer

Stephen Crooks
Senior Digital Marketing Manager

Vanessa Grant
Senior Content Marketing Manager

Lauren Finateri
Marketing Manager, Promotions &
Partnerships

Emma Forhan
Creative Content Producer

Shaun Lee
Graphic Designer

Jaya Arora
Social Media & Web Content
Coordinator

Joshua DeFreitas
Marketing Specialist

Box Office

Tom Kerr
Director of Ticketing Services

Fran Holywell
Box Office Manager

Holly Merkur-Dance
Box Office Manager

Sandie Chui
Manager of Ticketing Services

Annaijah Dacres
Box Office Assistant Manager

Alexander Jackson
Box Office Assistant Manager

Jennifer Norman
Box Office Assistant Manager

Thomas Quinlan
Box Office Assistant Manager

TO LIVE ADMINISTRATION

Brittney Channer

Box Office Duty Manager

Clayton Batson

Box Office Duty Manager

Michelle Cruz

Box Office Duty Manager

Zen Peterson

Box Office Duty Manager

Operations

Matthew Farrell

Vice President of Operations

Edward Delavari

Director of Capital Projects

Luke Belfontaine

Senior Project Manager

Bahram Aghakhan

Project Manager

Zane Elliott

Project Manager

Bruce Bennett

Project Manager

Kevin Anthonipillai

Project Administration Manager

Patron & Event Services

Sean Tasson

Director of Patron and Event Services

Andrew Fong

Executive Chef

Juliana Fay

Senior Manager, Food and Beverage Services

Jamie Johnson

Assistant Manager, Food & Beverage Services

Agnesa Voloshyna

Food & Beverage, Duty Manager

Saba Resaei

Food & Beverage Duty Manager

Tera Harnish-Christie

Duty Manager, Kitchen

Jai Bittles

Sous Chef

Natalie Ireland

Senior Manager, Events

Yuki Daloste

Events Manager

Fiona Alexander

Assistant Event Services Manager

Tracey Fyfe

Senior Manager of Patron Services

Lina Welch

Patron Services Manager

Tara Hitchman

Patron Services Manager

Corey Palmer

Patron Services Manager

Amy Myers

Assistant Patron Services Manager

Bruna Pisani

Patron Services Duty Manager

Corrine Engelbrecht

Patron Services Duty Manager

Hugo Ares-Gonzalez

Patron Services Duty Manager

Kizzie St Clair

Patron Services Duty Manager

Facilities

Abiodun Ojekunle

Director of Facilities

Jarryd Fish

Facilities Manager

Evan Ramdin

Chief Building Operator

Robert MacLean

Building Operator

Roderick Padasdao

Building Operator

Hamid Rabbi

Electrical Operator

Ehsan Rahman

Junior Building Operator

Ryan Nerona

Junior Building Operator

Marciano Ramos

Junior Building Operator

Eduardo Costales

Handyperson

Matthew Pannell

Handyperson

Omar Nurse

Stage Door Security Supervisor

Colin Dyble

Stage Door Security

Henry Fernandes

Stage Door Security

Mohammad Amaan

Vohra
Stage Door Security

Mohammed Shaikh

Stage Door Security

Mohuddin Memon

Stage Door Security

Pema Lakshey

Stage Door Security

Reza Moradi

Stage Door Security

Sangay Lhamo

Stage Door Security

Tushar Somani

Stage Door Security

Mohamed Zuhair,

Maintenance Supervisor

Maintenance

Ahmed Akinpelu

Aturuchi Joshua

Mizrah Mohamed

Roger Alves

Robert Bischoff

Rosalina Silva

Rosa Victoria

Sibten Vhora

Vivian Hije

John Vickery

Housekeeping Supervisor

Housekeeping

Adam Sikora

Alicia Surujbally

Andre O'Hare

Elliott Lewis

Harrison Eales-Estrada

Ian Romero

Jacob Jebadoss

Asirvatham,

Housekeeping

Karrie Smith

Lauren Smith

Mabel Liwag

Rhowen Jane Bunda

Programming

Max Rubino

Director of Programming

Ariana Shaw

Senior Producer

Zac Mansfield

Senior Producer

Kafi Pierre

Producer

Shannon Murtagh

Producer

Courtney Voyce

Bookings Manager

TO LIVE ADMINISTRATION

Alex Whitehead

Bookings Coordinator

John Kiggins

Programming Manager

Ayse Barut

Programming Coordinator

Sierra da Silva- Canadien

Indigenous Cultural
Curator

Corporate & Private Events

Scott North

Director, Corporate &
Private Events

Michaela Aguirre

Social Media Specialist

Thompson Michael

Administrative Assistant,
Corporate Events

Communities & Outreach

Tasneem Vahanvaty

Director of Communities
& Outreach

Dani Lantier

Communities & Outreach
Coordinator

Naomi Stokes

Communities & Outreach
Coordinator

Production

Kristopher Dell

Director of Production

Anthony (TJ) Shamata

Senior Production
Manager

Zoe Carpenter

Senior Production
Manager

Peter Suchostawski

Manager, Theatre
Systems & Special
Projects

Armand Baksh-Zarate

Production Manager

Charissa Wilcox

Production Manager

Chris Carlton

Production Manager

Kristopher Weber

Production Manager

Paul Dolan

Production Manager

Susanne Lankin

Production Manager

Emma Pressello

Production Coordinator

Meridian Hall Stage Crew

IATSE Local 58

Richard Karwat

Head Electrician

Steve McLean

Head Carpenter

Marcus Sirman

Head of Properties

David Baer

Assistant Carpenter

Zsolt Kota

Assistant Sound
Operator

Jason Urbanowicz

Assistant Electrician

Michael Farkas

Lead Video Technician

Colton Stang

Lead Sound Technician

St. Lawrence Centre for the Arts Stage Crew

IATSE Local 58

Wes Allen

Property Master, Bluma
Appel Theatre

Jay Blencowe

Head Carpenter, Bluma
Appel Theatre

Keijo Makela, Head
Sound Technician, Bluma
Appel Theatre

Giulia D'Amanzo

Head Electrician, Bluma
Appel Theatre

Benn Hough

Head Technician, Jane
Mallet

IATSE Local 822

Susan Batchelor

Wardrobe Head, Bluma
Appel Theatre

Meridian Arts Centre Stage Crew

IATSE Local 58

Aaron Dell

Head Technician, George
Weston Recital Hall

Finn Browne

Head Technician,
Greenwin Theatre

Duncan Morgan

Head Technician, Studio
Theatre

Ian Parker

Head Technician Lyric
Theatre



ART OPENS MINDS.

Proud to support the storytellers who open our minds,
inspiring us all to think bigger, together. **That's Enriched Thinking.[®]**

Scotia Wealth Management.

THE MUSICAL STAGE COMPANY SUPPORTERS

**Young Donors Club*

***Fermata Circle*

ENSEMBLE (\$100-\$349)

Carly Ainlay

Kim Alexander

In Memory of Mary, Milton &

Brad Allison

Anonymous (x5)

Madison Arnason*

Elizabeth Asselstine

Marie Baron

Victoria Bassett

Brian Beagle

Joan Belford

David Boechler

Linda Bracken

Dianne Bradley

Allen Braude

John Brenko

Ron Cameron-Lewis

In Honour of Anne-Marie Canning
(x2)

Leonard & Cheryl Cappe

Danny Chen

Rebecca Chesley

Laurie Clark

Neutron Controls

Jennifer Cook

Jerry & Sharon Cooper

Kendra Cordick*

In Memory of Jim Craig

Michael Davenport

Sara Davis*

Ann Devarashetty

Elizabeth Dingman

Michel D'Orsonnens

Lisa Douglas

Rosemary Dunsmore

Barry Edwards

Iris & Gary Ellis

David Goldbloom & Nancy
Epstein

Rick Archbold & Rick Feldman

Angela Ferrante

Barbara Fingerote

Sandra Flow

Tim Fort

Anne Fotheringham

Debbie Kassirer & Glenn

French

Wan-Li Gibson*

Mary Gleason

Susan Marcus & Rozanne

Grimard

Doreen Gryfe

Jennifer Hardy

Kaylee Harwood*

Alexandra Hayman*

Madeleine Hayman*

Karen Heath

Roslyn Holden

Pam Hrick

Heather Hudson

Ilene Hyman

Susan & Liman Jegins

Shreya Jha*

Rayna Jolley**

Ruth Manchee Kenins

Heather Kertland

Joshua Kilimnik*

Neville and Lorraine

Kirchmann

Emily Kulin

Francy Kussner

Lisa Lambert

Cynthia Ledgley

Leah-Ann Lymer

Megan MacKeigan

Alexandra MacLennan

Elizabeth Manson

Ruth & Harold Margles

Freya Maria*

Ken Marple

Rose Mastracci

Jan Mullally & John Matheson

David Matthews

Fiona McHugh

Robert McLaren

Julie Michailidis

Marc Michell

Carol Strom & John

Migicovsky

Barbara and Jack Millar

Jacquelyn Miskie

In Honour of Erika Morey*

Jeff Morris

Shannon Murtagh*

Carole & Richard Murzin

Lindsay Naft

Shivani Nathoo*

Penny Noble

Chris Oldford

Eldridge Oldford

Aliisa Percival

Michael Pezzack

Christine Pillar

Harold Povlaitis

Douglas Price

Dara Rames

Aubrey Reeves

Adele Robertson

D & F Robinson

Donna Rouzaud

Julia Sax

Erin Schachter

Jennifer & Noah Schein

Gayla & Ken Schwartz

Elizabeth Sheffield

Nanci-Jane Simpson

Suzanne Simzer

Deborah Smith

Deborah Staiman

Dryden Steeves*

Voy Stelmaszynski

Larissa Supleve

MaryAnn Supleve

Maureen Simpson and Almos

Tassonyi

Martha Tory

Michael Trent

Tom Vassar

Rick Verrette

Marla Wardinger

Linda Weir

Scott Werry

Hanna Wilmer

Mary Wilson

Rhonda Wooddisse

Debby Wright

Hersh Zeifman

FEATURED PLAYERS (\$350-\$749)

Guy Beaudin

David Bell

Graham Brunke

In Honour of Anne-Marie

Canning

Bernard F. Cocchiola

James Davis

Anne Fleming

Rona Kosansky and Jordan

Glick

Ron & Sari Goldenberg

Bob & Kathy Grant

Katie Hermant

THE MUSICAL STAGE COMPANY SUPPORTERS

Lorraine Kelly
Chris Kelsey
Guy Lacasse
Shawn McCarthy
Diane Morgan
S. Nevills
Cindy & Ed Nowina
Helen Ostovich
Carol Paabor
Erin Pleet and Chris Price*
Lori Russell
Sandra Schinnerl
Annalee & Brian Schnurr
Don Sider
Maureen Simpson
Mary Sinclair
Michael Murphy & Robert
Stephen
Ross & Ann Stuart
Sheryl Smolkin & Joel Troster
Stephen Wall
Laura Webster
Nancy Webster
Jennifer Webster
Paul Westlind
Cynthia Zimmerman

LEAD PLAYER (\$750-\$1499)

Daniel Brown**
Norman Buchanan
Karen Cheah
Annie & Rich English
Opolsky Family
John & Susan Goddard
Anna Jarmain
Linda Lee
Rosita Lee
Scott Belton & Jessica Leeder
Bart Nickerson
Nelson Parker
Tisha Rattos
Nan and Jack Wiseman Family
Fund at the Jewish Foundation
of Greater Toronto
In Honour of Hartley
Zwingerman

VIRTUOSO (\$1500-\$4999)

Paul Beauchamp**
Shannon Bell
Helen Burstyn, C.M.
Linda Lewis & Lorie Cappe

Mark & Susan Davis
Marg Deeks
Alan Dingle
Pam & Richard Earle
Kathy Kacer & Ian Epstein
Anita Ferrari
The Peter & Eleanor Daniels
Foundation
Susan Garvie
Andrew Gillespie
Bruce Dean & Robert Hall
Victoria Lee & Philip Hebert
Ray Hogg
Kent James
David Kaplan
Michelle Knight
Diana Bennett & Spencer
Lanthier
Jefferson & Sally Mappin
Richard Sniderman & D'Arcy
Robert
Sarah Robertson
Robert Sherrin
Jason Spetter
Kate Supleve**
Don Deboer & Brent Vickar
Martin R. Wasserman
Matt Webster
Carole Winberg

CRESCENDO

Beauchamp-Winskell Family
Alyse Bernbaum
Linda Chu & John Donald
James Fleck Family Foundation
Kathleen and Dennis Freeman
Penny Fine & Hugh Furneaux
Howard, Barclay & Associates
The Lawrence Family Foundation
Gary and Margot Marcus
Dr. Rhonda Zwingerman & Jeremy
Opolsky
Megan Deeks & Simon
Paabor
Gary Rogers
Paul Orlander & Helayna Shekter
Patrick David & Michael Smith
Howard Sokolowski
Ellen & Les Wallace
Mitchell Marcus & Orrin
Wolpert**

MAJOR GIFTS

Sustaining Creative Support

Anne-Marie Canning

Season Sponsor

TD Bank Group

Sponsors and Major Gifts

Anonymous
Anonymous **
BMO
Mark & Cherie Daitchman
Kate Alexander Daniels & David
Daniels
Haynes-Connell Foundation
The RBC Foundation
The Krawczyk Family Foundation
The William and Nona Heaslip
Foundation
The Catherine & Maxwell
Meighen Foundation
The Aubrey and Marla Dan
Foundation
Roger & Kevin Garland
The Estate of Craig Hanson
David & Sheryl Kerr
The Lawrence Family Foundation

SUSTAINING CREATIVE SUPPORT

Anne-Marie Canning

SEASON SPONSOR



GOVERNMENT SUPPORTERS



PROGRAM & PRODUCTION SPONSORS

ONE
SONG
GLORY



COMMUNITY
ACCESS
SPONSOR



NEW WORK
DEVELOPMENT
SPONSOR



UNCOVERED
PRODUCING PATRONS
Anonymous

LEADING LIGHTS & PROGRAM SUPPORTERS

AUBREY & MARLA DAN FUND
FOR NEW MUSICALS
LEADING LIGHT



UNCOVERED
LEADING LIGHT
The Haynes-Connell
Foundation

APPRENTICESHIP
PROGRAM SUPPORTER



LEADERSHIP DEVELOPMENT FUND
PROGRAM SUPPORTER

The William and Nona Heaslip
Foundation

ONE SONG GLORY
PROGRAM SUPPORTER

The Lawrence
Family Foundation

SEASON SUPPORTERS

Anonymous

The Catherine & Maxwell
Meighen Foundation



KIMBERFIRE

Coffee is our passion project.



**PILOT COFFEE
ROASTERS**

Official partner of TO Live, celebrating the arts,
creativity, and community.

Learn more at pilotcoffee.roasters.com.

DONORS

Soulpepper is very grateful to all of the individuals, corporations, foundations, and government agencies who contribute to its continued growth and success.

Donor support allows Soulpepper to offer employment to artists, to cultivate an environment of creation and exploration, and to enrich the community with great theatre.

The generosity of our many supporters makes everything we do at Soulpepper possible.

TO MAKE A DONATION

VISIT: soulpepper.ca/donate **CALL:** 416 203 6264 x x 188 **EMAIL:** development@soulpepper.ca

Corporate & Foundation Supporters

\$300,000+

The Slight Family Foundation*

\$125,000 - \$299,999

The Catherine and Maxwell Meighen Foundation

\$75,000 - \$124,999

BMO Financial Group*
CIBC*

George Cedric Metcalf Charitable Foundation
RBC Foundation*
Scotia Wealth Management*
Sun Life Financial*
TD Bank Group*

\$25,000 - \$74,999

Canada Life*
The Keg Spirit Foundation
Kingfisher Foundation
Lindy Green Family Foundation
Polar Asset Management Partners*
Power Corporation of Canada
Ray Ferris Springboard Fund

\$10,000 - \$24,999

The Joan & Clifford Hatch Foundation*
The McLean Foundation
Middlefield Resource Funds*
Paul Barber Foundation
The Sabourin Family Foundation

\$5,000 - \$9,999

Bulmash-Siegel Foundation
The Browning Watt Foundation*
Distillery Restaurant Corporation
The Henry White Kinnear Foundation*
The Norman & Margaret Jewison Foundation*
Pitblado Family Foundation*
Mason Law
Moez & Marissa Kassam Equity Fund
Morgan Meighen & Associates*
Torkin Manes LLP
The William and Nona Heaslip Foundation

Up to \$4,999

Balfour Bowen Family Foundation*
Geist Family Foundation*
Jackman Foundation*
John Family Fund
Philip Fox Fund
The Racioppo Family Foundation
The Nick & Lynn Ross Charitable Foundation*
The Kit Skelly Foundation

Individual Supporters

Major Gifts

\$100,000+

Diane Blake & Stephen Smith*
The Estate of Susan Brenninkmeyer
Gary & Donna Slight*
Sylvia Soyka*

\$50,000 - \$99,999

Vanessa Morgan & Steve Wolf*
Kathleen & Bill Troost*

Artistic Director's Circle

\$25,000 - \$49,999

Deb Barrett & Jim Leech*
Victor & Maureen Dodig*
Dave Friesema & Sanyo Lue-Kim
Kevin & Roger Garland*
Sonny Goldstein & Dr. Betty Rozendaal
Melissa Kennedy
Sanjay Nakra and Deepa Daryanani
James O'Sullivan & Lucie Vallée
Karrin Powys-Lybbe & Chris von Boetticher*

Soul Circle

\$10,000 - \$24,999

Marilyn & Charles Baillie*
Robin Cardozo & Jeff Richardson*
Jim Fleck*
Robert & Julia Foster
Dana Lafarga*
Karey Lunau
Bill Morneau & Nancy McCain*
James & Sandra Pitblado*

Heart & Soul

\$5,000 - \$9,999

Rob & Teresa Brouwer*
David Brown*
Melissa Clarke
Penny Fine & Hugh Furneaux*
Beverley Flynn

SOULPEPPER SUPPORTERS

Robin Heintzman
& Gordon Currie*
Kiessling/Isaak Family*
Sheena Macdonald
& Phil Schmitt*
Maja Neable
The Pat and Tony Adams Freedom
Fund For The Arts
Mazi Raz
Aaron Sanderson & Kevin
Keystone
Helen Sinclair*
Martha Tory
Cindy Tripp
Alan Walker*
Sally Wright*

Curtain Club

\$2,500 – \$4,999

Anonymous
Elspeth Bowler*
Nicholas Chambers
John Chang & Elizabeth Lasserre
David & Yvonne Fleck
Mark Graham
Mary Hallward
Shira Hart*
Kent James
Christopher Lee
& Paula Mosbrucker
Daniel McCarthy*
Gordon & Elaine Pitts*

Benefactor

\$1,000 – \$2,499

Anonymous
Robin Alter & Martin Yaffe
Sarah Bay-Cheng
Michelle Beveridge*
Martha & George Butterfield*
Karen Cheah*
Jane & Bob Clapp
Rita & Mark Daniel*
Denise Donlon*
Charmain Emerson
Russell & Carol Finch*
Martha Fisher
Steve and Mariann Geist
Ken Gingerich & Michael Oakes*
Jamie Goad
Sari Goldenberg*
Paul & Vicki Hand*

Rob Harper*
Vic & Marion Hepburn
Ellen Hill
Judith John
Mohamed Khaki
Ian & Dorothy Macdonald*
Elaine Kierans & Shawn
McReynolds*
Anil Mohan
Ed & Cindy Nowina*
Jason Oord
Alicia Rose
Ann Savege*
Andrew Scriver
Ivor & Renee Simmons*
Jennifer Thompson
Sunanda Vaidheesh
Tony & Mary van Straubensee*
Greg Wilkie
Jan Wong

Friend

\$250 - \$999

Lynn & David Abernethy
Kerri Anderson
Jay Armitage
Gideon Arthurs
Wendy Balfour
Carol Barber*
Guy Beaudin
Neil Betteridge
Theresa Boyle*
Mary Lou Brock*
Graham Brunke*
Helena Bzonkova*
Margaret Anne Cain
Claudia Colas
Gayle Corcoran
Catherine Cornell & Declan Lane*
David Craig
& Donna Piccinin-Craig
Joan Cranston*
Carol Dalgado
Shirley Dawe
Don DeBoer & Brent Vickar*
Steven D. Donohoe*
Laura Drake
Debbie Dumaresq
Steven Farber
Wendy Evans & Chris Elson
John & Shari Ezyk
Steven Farber

Bill & Rosemary Fillmore
Barbara Fingerote*
Neil Foster
David & Margaret Fox-Revett
Donald Fraser & Judythe Little
Linda Galen & William Draper
Kamala Jean Gopie
Doreen Gryfe*
Eva Haggerty
Anne & William Harker*
Susan Helwig
Lawrence & Beatrice Herman*
Paul Hickey
Joe Hoja
Richard Horner*
Naomi & Sandy Horodezky*
Clive Houseman
Kishwar Iqbal
John Martin & Sampa Bhadra
Barry and Cathy Joslin
Dagmar Kanzle
Soussanna Karas
Marcia & Paul Kavanagh*
Olanre Kayode
Robert Kee
Don & Francie Kendal*
Hans Kluge
Raj & Shaila Kothari*
Farah Kurji
Dale Lawr*
Anne Layton
John Leavitt
Victoria Lee
Valentia Lee-Brotherton
Karen Leitner
Brad Lepp
Linda Lewis
Maureen Littlejohn
Oliver & Gillian Long*
Larry Lubin*
Joanna Martin
Linda Massey
Kelly McDonald
& Greg Sigurdson*
Micheline McKay
& Richard Comparey*
Mark McLean
Susan Moellers*
Dorothy Morari & James Mryglad*
Margaret and Gary Mousseau
Mary Jane Mossman
& Brian Bucknall*

SOULPEPPER SUPPORTERS

Steve Munro*
Paul Murphy*
Penny Noble
Brian O'Leary*
Christine Pearce
Stephen Phillips*
Diane Pitblado
Archie Platt
Harold Povilaitis*
Kerry Rittich
Sylvia Schmid
Catherine Seton
Phillip Silver
Larry Smith*
Patricia Stowe
Jill Strimas
Carol Strom
Carol Swindell
W. Michael Than*
Doug & Gail Todgham*
Karen Turner
Stephen Uzielli & Robin Siegeman*
Teresa Walsh
Joan & Robert Weppler
John Wolf
Marc Zwelling

*Soulpepper extends our special gratitude to members of our **Soul Mates** program, who donate monthly to support our artistic & educational programming.*

Soulpepper Legacy Circle

The following people have generously arranged bequests to Soulpepper:

*Robin Cardozo
Roger Garland
Ken Gingerich & Michael Oakes
Shira Hart
Anne Louise Layton
Claude Marchand
Jenny Tan
Michael Than
7 anonymous friends of Soulpepper*

Women Centre Stage

Deb Barrett & Jim Leech
Maureen & Victor Dodig
Kiessling/Isaak Family
Jaqui Parchment
Karrin Powys-Lybbe
& Chris von Boetticher
The Pat & Tony Adams
Freedom Trust

Women Centre Stage

Co-Chairs (2020 - Present):

Dana Lafarga
Sanjay Nakra

If you have any questions about your recognition or support, please contact us 416-203-6264 x 138 or development@soulpepper.ca

Individuals recognized for donations made between Jan 1 2024- Jan 1 2025

*Donors who have given to Soulpepper for 10+ consecutive years
+Soulpepper staff and Artist donors

SOULPEPPER SUPPORTERS – WE GRATEFULLY ACKNOWLEDGE THE SUPPORT OF THE FOLLOWING:

TRANSFORMATIONAL GIFT



MUSIC SPONSOR

**THE
SLAIGHT
FAMILY**

CORPORATE & PROGRAM SPONSORS



**KEVIN & ROGER
GARLAND**

FOUNDATION SUPPORT

*The Catherine and Maxwell
MEIGHEN FOUNDATION*

**METCALF
FOUNDATION**

**Pitblado Family
Foundation**

**The Joan & Clifford
Hatch Foundation**



SOULPEPPER ACADEMY



Sylvia Soyka

**Kingfisher
Foundation**



**The Norman & Margaret
Jewison Charitable Foundation**

SOULPEPPER ON THE STAGE



Sylvia Soyka

**MIDDLEFIELD
RESOURCE FUNDS**



**DIANE BLAKE +
STEPHEN SMITH**

MEDIA AND IN-KIND SPONSORS



GOVERNMENT SUPPORT





Member since 2024

FOR US,

**YOU'RE THE STAR
PERFORMER.**

Meridian™

Around here, banking is different.

MeridianCU.ca

™ Trademarks of Meridian Credit Union Limited.

TO LIVE SUPPORTERS

We offer our sincere thanks to all our donors and supporters. Your gift to TO Live and the TO Live Foundation, no matter the size, makes a difference.

Patricia Alps
A Ambrose
Shirley Arnold
Aina Arro
Bruce Bennett
Shira Bernholtz
Doris Chan
Suzette Chen
Judith C. Cole
James Dyche
Joanna Ebbutt
Penelope Evans
Aviva Fleising
Johann Gomes
Dave Hibbs
Edith Lo
Keith Morino
Susan Padmore
Principles
Sophia Rasheed
Linda Salna
Madeleine Skoggard
Peter Skoggard
Debbie Smith
Kaspars Tuters
Karen Volpe
Peggy Whorpole
Stephen Zener
Edwin Zukowski

TO Live Champions

Brian Astl
Allan Barish
Barbara Basta
Brian Beagle
Eva Bednar
Sandra Bellisario
Elsbeth Bowler
Ayesha Chatterjee
Jeannette Chau
Rita Chemilian
Jason Clark
Diana Cockburn
Raghunath Davloor
Suzanne Denis
Leah Faieta
Matt Farrell
Shiming Fei
Anne Fleming

Julia Foster, C.M.
Robert J. Foster, C.M
Linda Galen
Archana Gandhi
Kevin Garland
Greg Gaudet
Kelly Graham
Jennifer Granatstein
Elaine Iannuzziello
Janice Johnson
Isabelle Kaczmarek
Bob Kebic
Tasker Kelsey
The Celebration of Life Co
Kinwood
Paul Kirk
Megan Kotze & Michael Longfield
Cary Lavine
Giacomina Mastromarco
Honora McCabe
David McCracken
Kathy & Kerry McKenna
Isabel Vicente Menanno
Susan Moellers
Sorina & George Oprea
Prestige Buildings 2016 Ltd
Phillip Roh
Jeffrey Rohrer
Rob & Olga Sandolowich
Schleese Family Charitable Fund
Walter Shaw
Elizabeth J Shropshire
John Sims
David Smith
Patricia Steer
Paul Straatman
Katie Sultan
Harvey Swedlove
Alan Teder
Christine Van Duelman
Gail Vanstone
Asha Varadharajan
Vida Peene Fund
John C. Wagner & Steven Tetz
Westdale Construction Co.
Limited
Lorna White
Jane Withey
Mark Zador

Major partners

Canada Council for the Arts
City of Toronto
Government of Canada
Government of Ontario
Greenwin Inc.
Meridian
Ontario Cultural Attractions Fund
The Weston group of companies

Major program supporters

Anonymous (1)
Armenian General Benevolent Union
The Barry and Laurie Green Family Charitable Trust
IATSE Local 58 Charitable Fund
The Lewitt Family Foundation
Miziwe Biik
Meridian
Power Corporation of Canada
TD Bank

Venue Sponsors and Partners

Arterra Wines Canada
Earth Group
Muskoka Brewery
Partake Brewing
Pilot Coffee Roasters
SpotHero

TO LIVE SUPPORTERS

TO Live's aspirations can't come to life without help from our supporters.

Support from the City of Toronto, major partner Meridian, and the generous donations of other partners and individuals creates space for artists, performances, and related activities. We appreciate the generosity of all our supporters.

Lead Partners



Major Program Supporters



Canada Council
for the Arts
Conseil des arts
du Canada



Venue Sponsors



Annual Program Partners



CROW'S THEATRE GRATEFULLY ACKNOWLEDGES ALL THE DONORS WHO SUPPORT OUR ONGOING CREATION OF THEATRE AND THE DEVELOPMENT OF CANADIAN ARTISTS IN OUR EAST END HOME.

LEAD SEASON
SPONSOR



LEAD SEASON
PATRON

SYLVIA
SOYKA

VISIONARY CIRCLE

SEATON MCLEAN
& SONJA SMITS

SANDRA & JIM
PITBLADO

ANONYMOUS (4)

CORPORATE AND FOUNDATION CHAMPIONS



CIBC CAPITAL
MARKETS



THE THOR E. & NICOLE
EATON FAMILY
CHARITABLE FOUNDATION



THE WILLIAM & NONA
HEASLIP FOUNDATION

MEIGHEN FAMILY
FOUNDATION

METCALF
FOUNDATION

PYXIS INVESTMENT
CORPORATION



Capital
Markets



sabourin family
foundation

Scotiabank.



TD READY
COMMITMENT



TD Securities



the
wuchien michael than
foundation

TRIPP/SMITH
FAMILY FOUNDATION



R. Howard Webster Foundation
Fondation R. Howard Webster

MAJOR DONORS

MARILYN &
CHARLES BAILLIE

LAURA DINNER &
RICHARD ROONEY

THE ESTATE OF
GEORGE EDWARD GRANT

THE MEERKAMPER
FAMILY

GERALD LUNZ
& RICK MERCER

JULIA & GILLES
OUELLETTE

THE HON. DAVID &
SHELLEY PETERSON

BOB &
TERRY SMITH

ANONYMOUS (2)

GOVERNMENT SUPPORTERS



FUNDED BY
THE CITY OF
TORONTO



ONTARIO ARTS COUNCIL
CONSEIL DES ARTS DE L'ONTARIO
an Ontario government agency
un organisme du gouvernement de l'Ontario



Canada Council
for the Arts
Conseil des arts
du Canada

Ontario








Funded by the
Government
of Canada

Canada






THANK YOU!

STAY CONNECTED AND UP-TO-DATE





SOULPEPPER THEATRE

-  [SOULPEPPER.CA](https://soulpepper.ca)
-  [@SOULPEPPERTHEATRE](https://www.instagram.com/soulpeppertheatre)
-  [@SOULPEPPER](https://twitter.com/soulpepper)
-  [FACEBOOK.COM/
SOULPEPPERTHEATRE](https://www.facebook.com/soulpeppertheatre)
-  [YOUTUBE.COM/
SOULPEPPERTHEATRE](https://www.youtube.com/soulpeppertheatre)
-  [@SOULPEPPERTHEATRE](https://www.tiktok.com/@soulpeppertheatre)
-  [SOUNDCLOUD.COM/
SOULPEPPERTHEATRE](https://www.soundcloud.com/soulpeppertheatre)

THE MUSICAL STAGE COMPANY

-  [MUSICALSTAGECOMPANY.COM](https://musicalstagecompany.com)
-  [@MUSICALSTAGECO](https://www.instagram.com/musicalstageco)
-  [Vimeo.COM/
MUSICALSTAGECO](https://vimeo.com/musicalstageco)
-  [FACEBOOK.COM/
MUSICALSTAGECO](https://www.facebook.com/musicalstageco)
-  [SPOTIFY OR HEARNOW*](#)

CROW'S THEATRE

-  [CROWSTHEATRE.COM](https://crowstheatre.com)
-  [@CROWSTHEATRE](https://www.instagram.com/crowstheatre)
-  [@CROWSTHEATRE](https://twitter.com/crowstheatre)
-  [FACEBOOK.COM/
CROWSTHEATRE](https://www.facebook.com/crowstheatre)
-  [YOUTUBE.COM/
CROWSTHEATRETORONTO](https://www.youtube.com/crowstheatretoronto)

TO LIVE

-  [TOLIVE.COM](https://tolive.com)
-  [@TOLIVEGRAM](https://www.instagram.com/tolivegram)
-  [@TOLIVETWEETS](https://twitter.com/tolivetweets)
-  [FACEBOOK.COM/
TOLIVEBOOK](https://www.facebook.com/tolivebook)
-  [YOUTUBE.COM/
TOLIVETUBE](https://www.youtube.com/tolivetube)

The artists and staff of Soulpepper, The Musical Stage Company, Crow's Theatre, TO Live, and the Young Centre for the Performing Arts acknowledge the original caretakers and storytellers of this land —the Mississaugas of the Credit, the Haudenosaunee, the Anishinaabe, and the Wendat First Nations. We commit to honouring and celebrating their past, present and future.